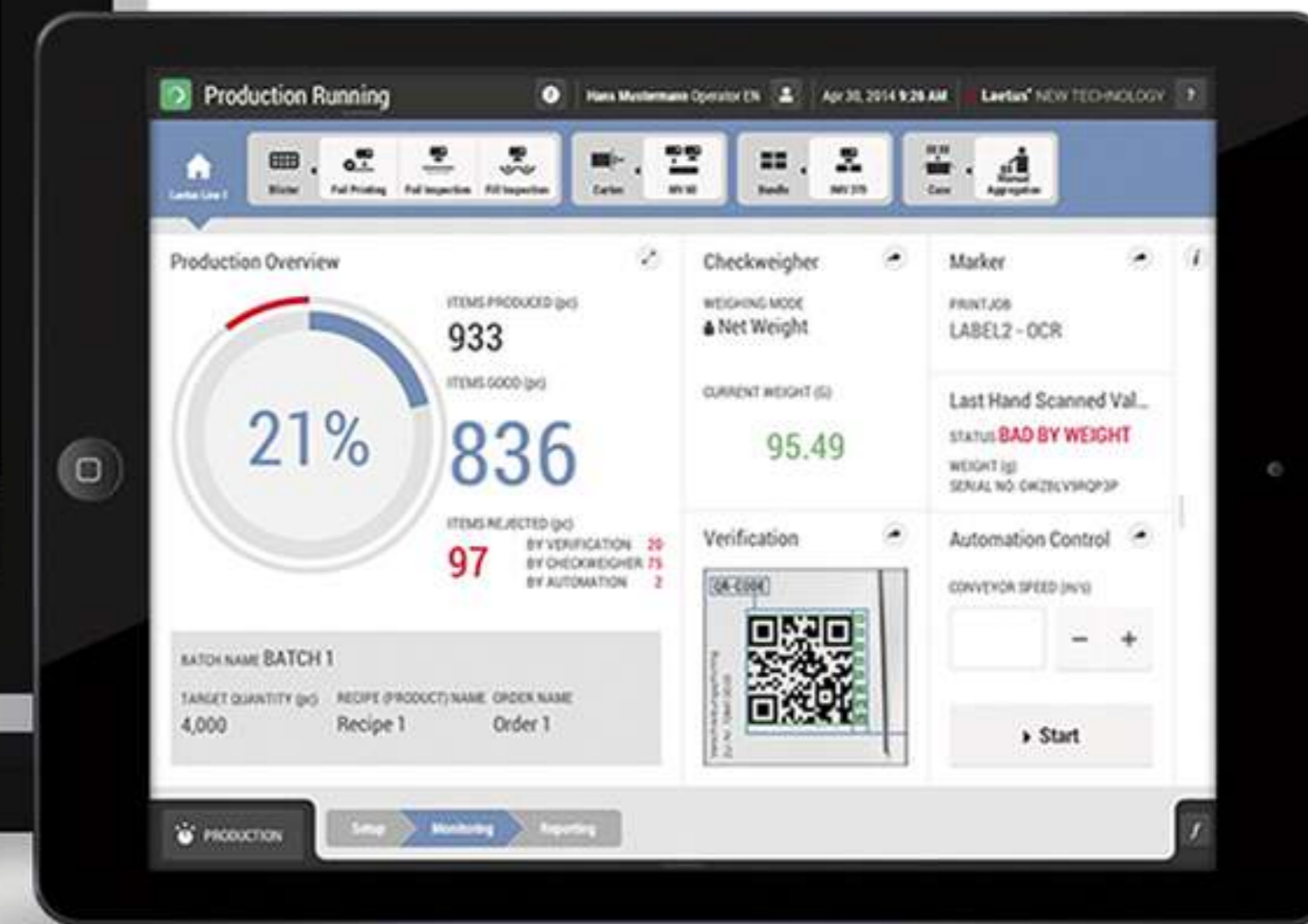
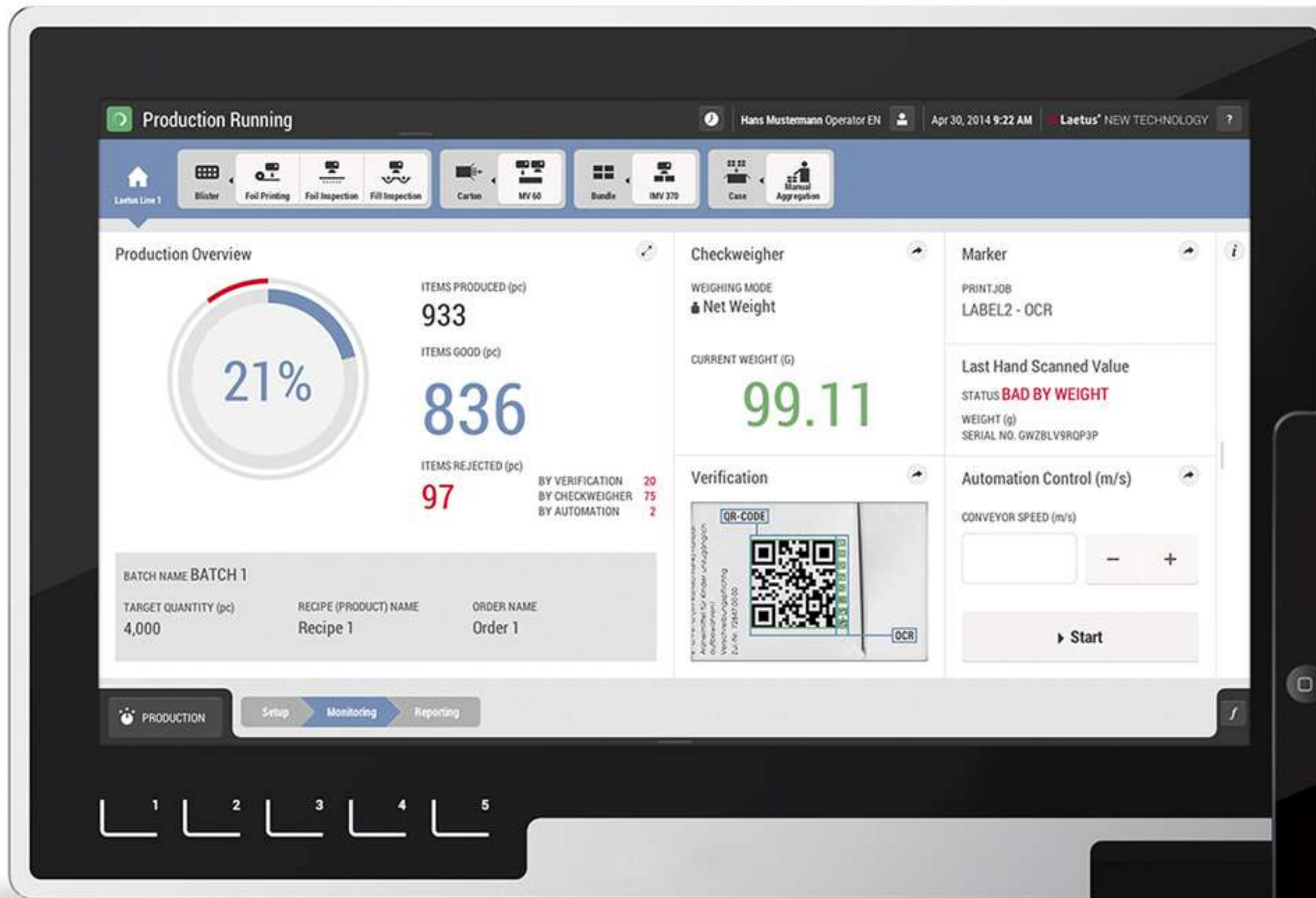


OptiMate

Corporate UI for the Coesia Group

Advanced Human Machine Interface



Challenge & Use

Complex Specifications

- Originally conceived for HAPA AG and Laetus GmbH
- Used in Packaging Processes for Pharmaceutical-, Cosmetic- and Medical-Industry, Printing, Identification, Inspection, Quality Control and Track & Trace Systems
- Large Product Lineup

- Wide Range of Use Cases
- Numerous Integration scenarios
- Different Application types
- Integration into 3rd Party Hardware



Printing System



Inspection System - Standalone Application



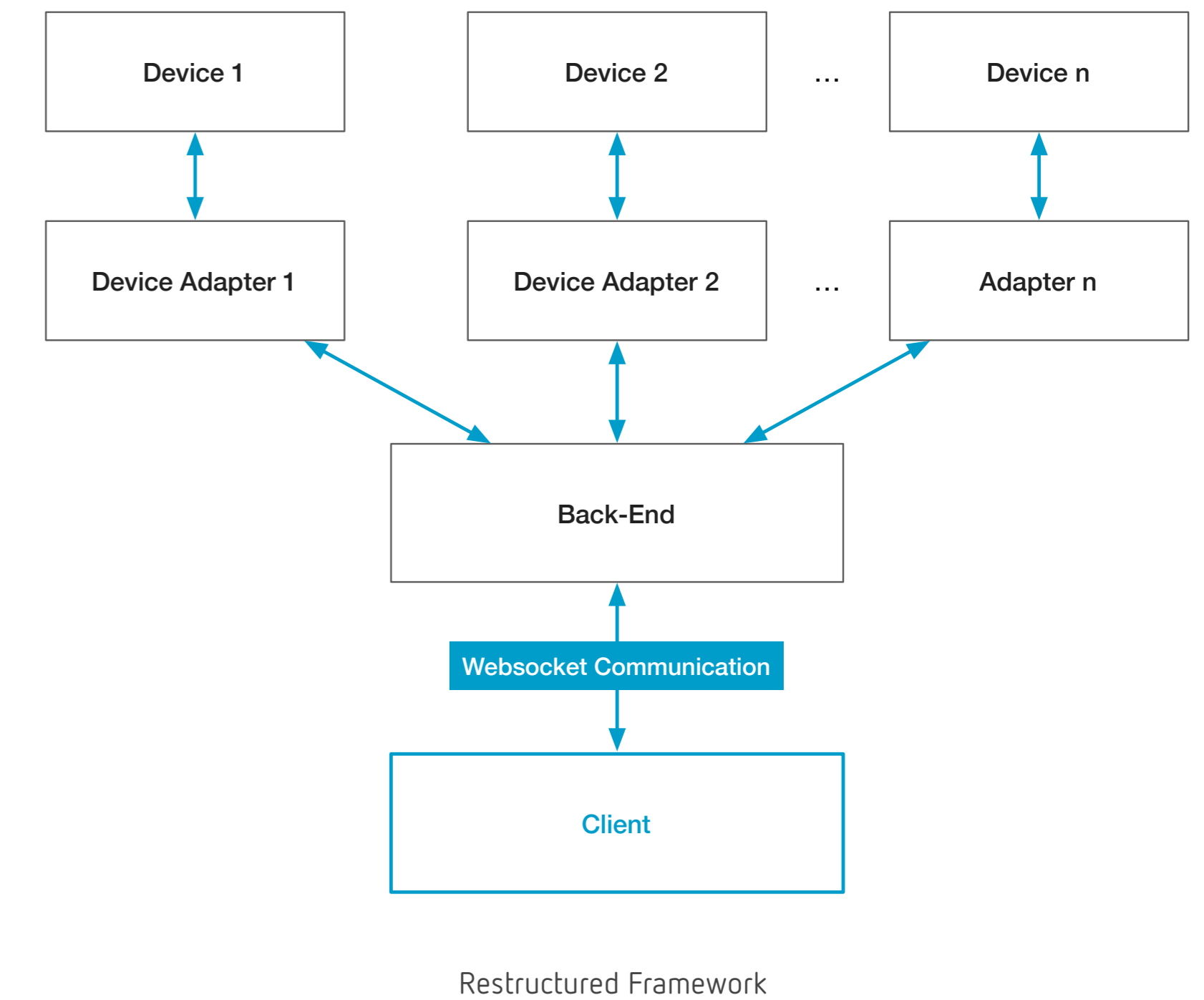
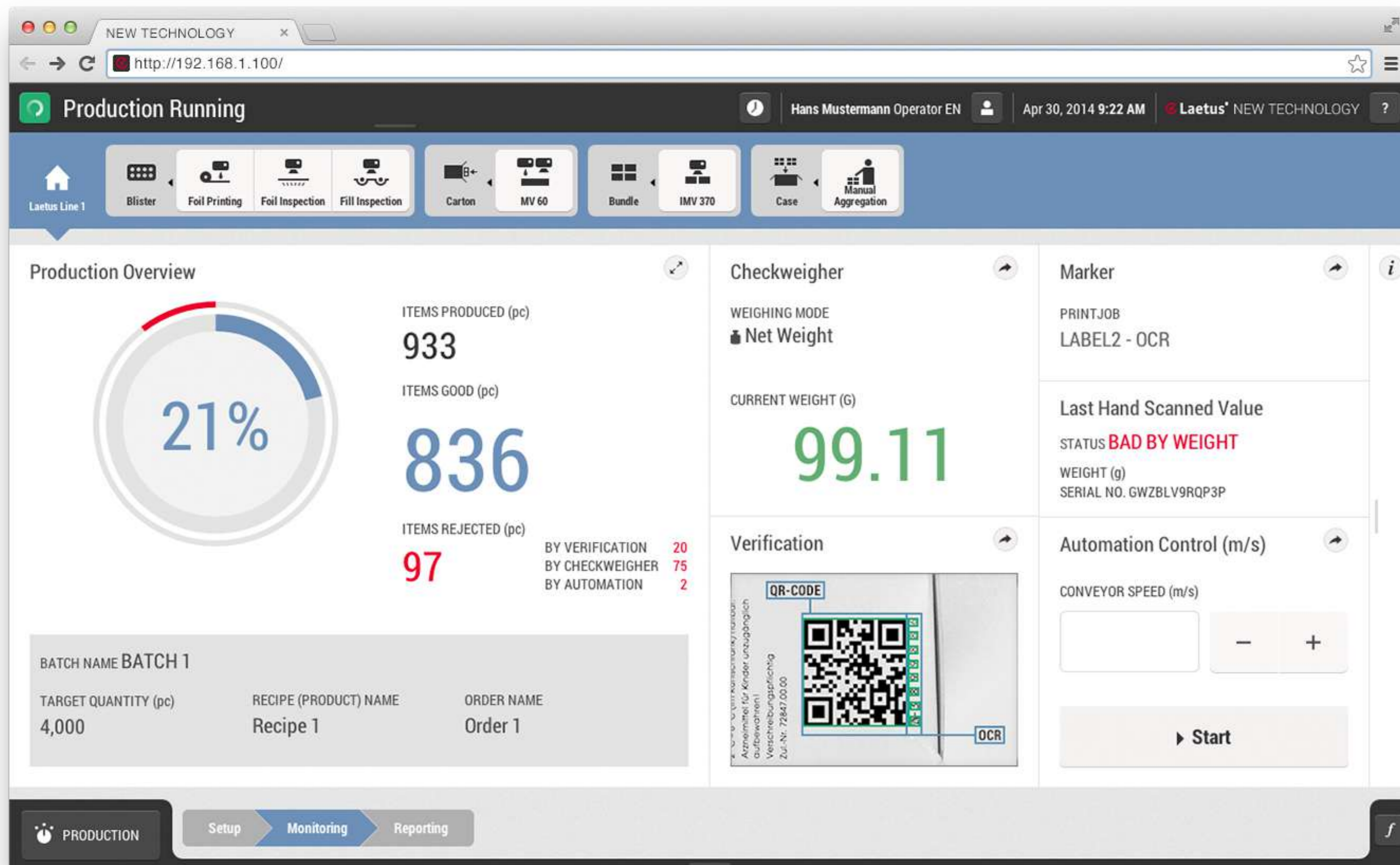
Inspection System - Production Line Integration

New Technology

Real HTML5 Web Technology

- Developed from Scratch
- Single-Page Client-Side Application
- Consistent Browser based Display
- State-of-the-Art HTML5 and CSS Features
- Fully scaleable, dynamic UI
- Realtime Server Communication
- Use of Web-Sockets
- Modular Component Architecture

- Customized Control Panels
- Easy Support of mobile Devices



```

<section class="widget">
  <h1>Titel</h1>
  <div class="value">23.43</div>
  <button class="close">Close</button>
</section>
  
```

HTML-Code Example

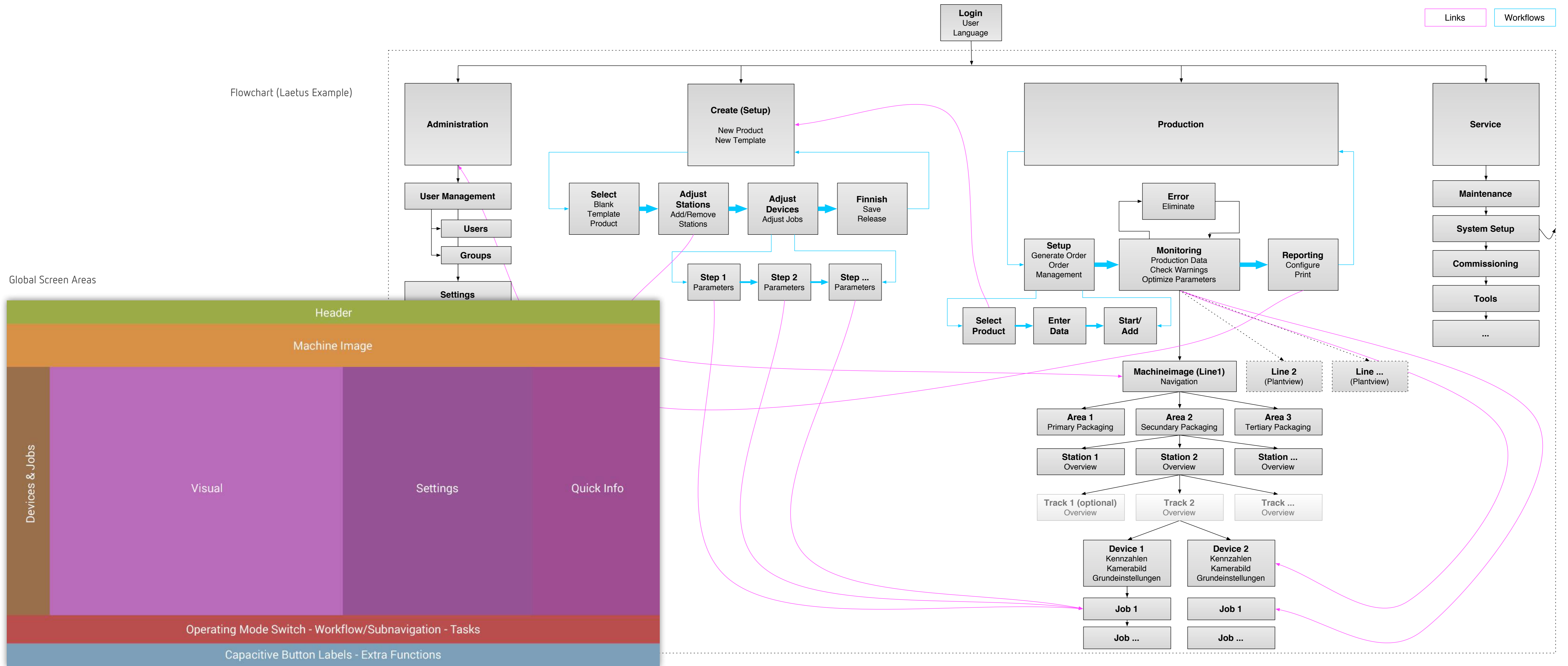
Consistent Design Concept

One Concept

- For Hapa, Laetus, FlexLink, ... (Coesia)
- Uniform Information Architecture

- Common Operation Concept
- Global Screen Areas

- Full Integration of TTS, WT- and 3rd-Party Devices in one GUI



Features & Advantages

One Design

- Uniform Screen Design
- Consistent Color Concept
- Shared Graphic Libraries
- Coesia-Group wide deployable



Panel Design



Panel Design Views

Software/Hardware Synergy

- Seamless Integration
- Graphic Addressing (Corners, Material Colors, ...)
- Functional Handshake:
- Configurable Labeling of Capacitive Switches
- High Quality Overall Impression



Interaction with Capacitive Switches

Interface Design

User Centered Design

- Clear visual Information Hierarchy
- Short and ergonomic Operating Paths
- Display of related Information Side by Side
- Strictly semantic Color Code
- Unified Messaging System
- Workflow oriented Processes
- Integrated Contextual Help
- Step by Step assisted Processes
- No Hidden Features



Visual Information Hierarchy

Type	Message	Date	Comment	Status
Error	Error 123 Name Lorem Ipsum	13.05.2013 10:30	Lorem Ipsum Dolor sit amet	!...
Warning	Warning123 Name Lorem Ipsum	13.05.2013 10:30	Lorem Ipsum Dolor sit amet	!...
Info	Info 123 Name Lorem Ipsum	13.05.2013 10:30	Lorem Ipsum Dolor sit amet	!...
Warning	Warning123 Name Lorem Ipsum	13.05.2013 10:30	Lorem Ipsum Dolor sit amet	confirmed
Warning	Warning123 Name Lorem Ipsum	13.05.2013 10:30	Lorem Ipsum Dolor sit amet	confirmed
Warning	Warning123 Name Lorem Ipsum	13.05.2013 10:30	Lorem Ipsum Dolor sit amet	confirmed
Warning	Warning123 Name Lorem Ipsum	13.05.2013 10:30	Lorem Ipsum Dolor sit amet	confirmed
Warning	Warning123 Name Lorem Ipsum	13.05.2013 10:30	Lorem Ipsum Dolor sit amet	confirmed
Warning	Warning123 Name Lorem Ipsum	13.05.2013 10:30	Lorem Ipsum Dolor sit amet	confirmed

Message History

Online Help



Color Code



Workflow Navigation

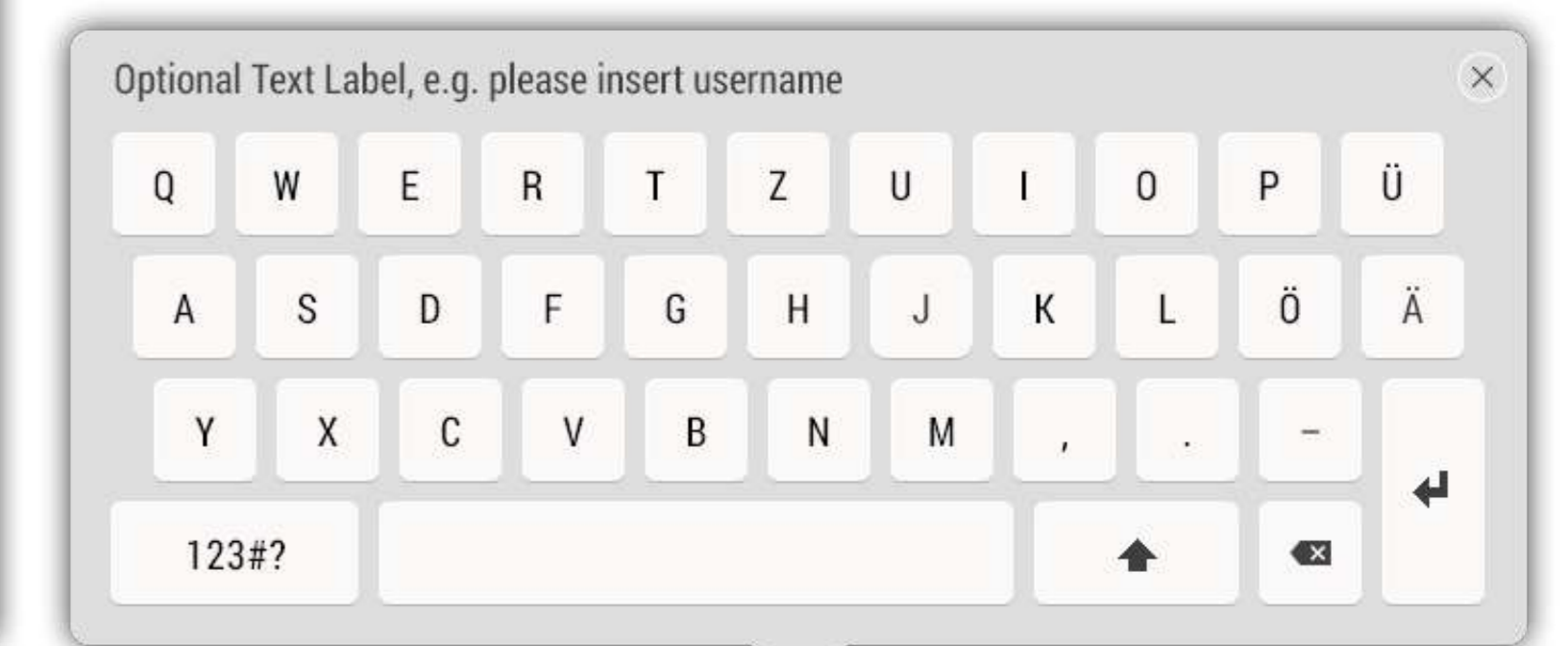
Usability

Usability driven Operation

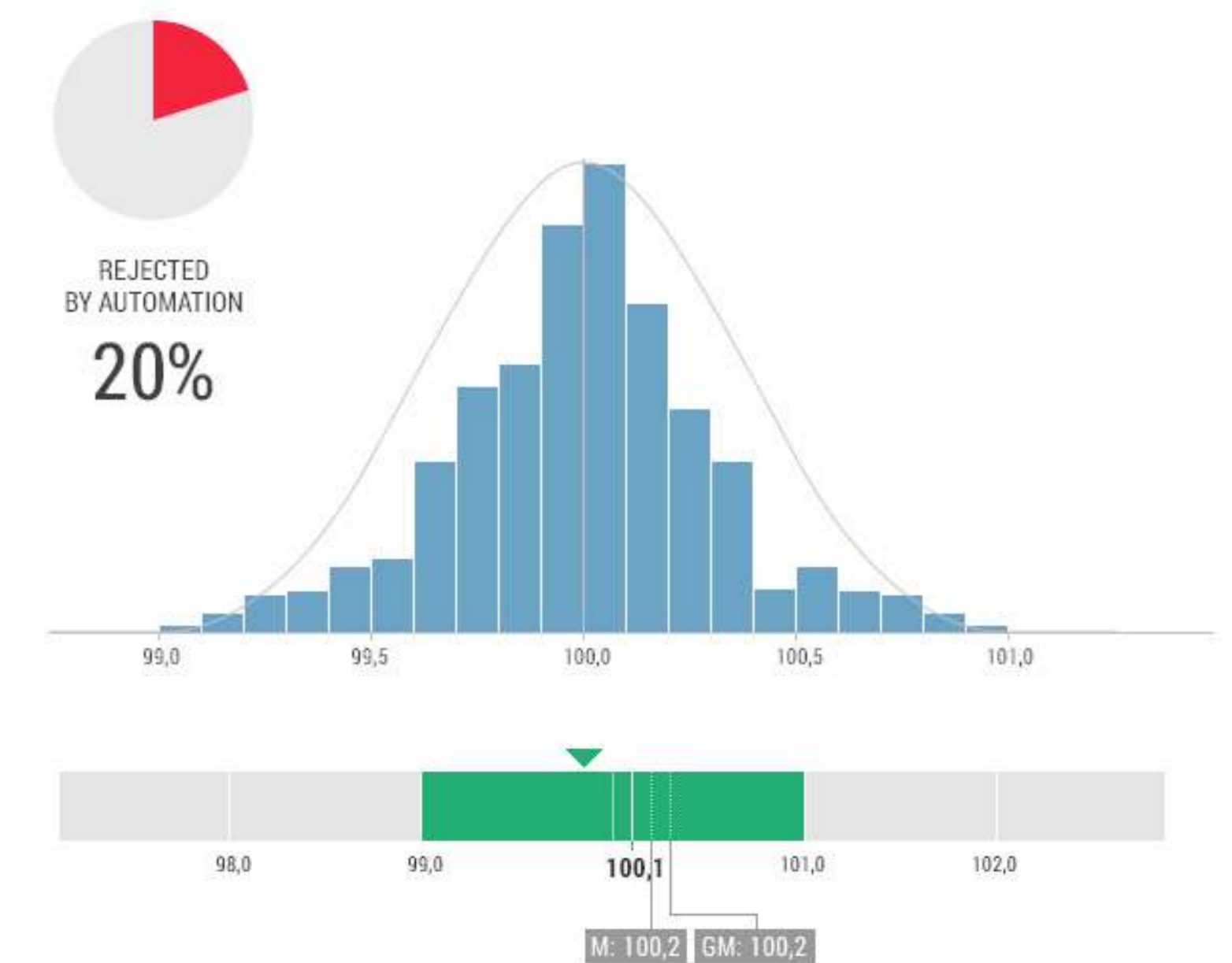
- Integration of Multitouch- and Swipe-Gestures
- Optimized for 2-Hand Multitouch-Operation
- Ergonomic Positioning of Controls
- Automation of default Processes to the highest possible Extent
- Easy Access of Functions via multiple Paths and Cross-Links
- User Role defines Range of Software Functionality
- Ergonomic Positioning and touch-optimized Sizing of all Controls
- Easy to understand graphic Charts



Swipe to Open Menus



Ergonomic On-Screen Keyboard and Numpad



Graphic Charts

Modularity

Adjustable Content

- Free Content Scalability
- Operation of single Devices as well as complex Lines up to Plant Management
- Organization of Elements in Groups and Folders
- Abstract Machine Image with Tree-Functionality to browse large Configurations
- Modular Widget and Dashboard Concept for Device Monitoring
- Dashboards and Widgets can be easily adjusted to User Role, Panel or Machine Configuration
- Help Content can be edited by Client

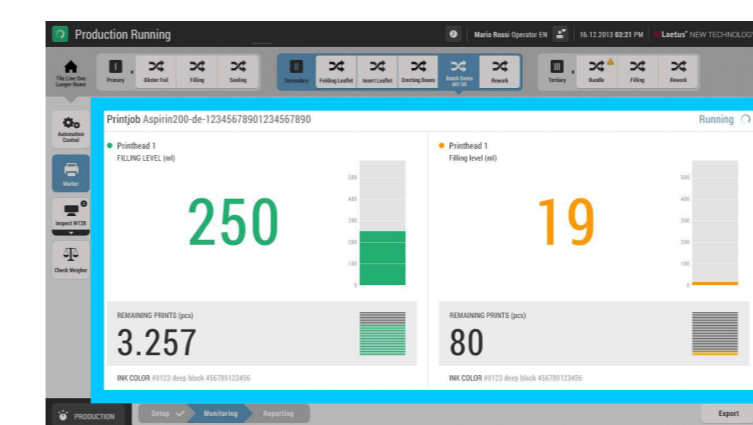
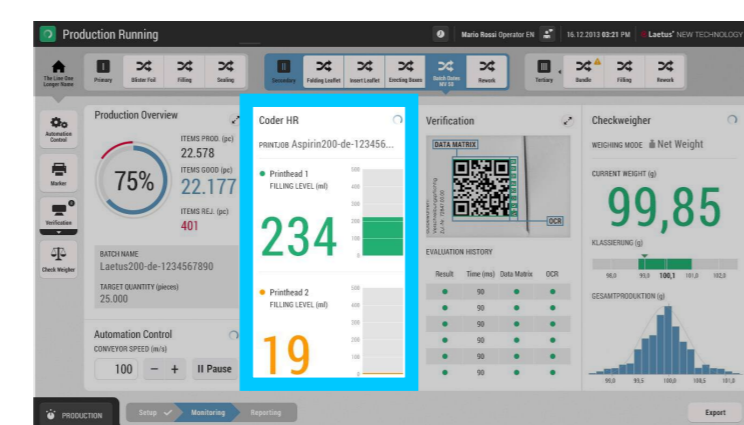
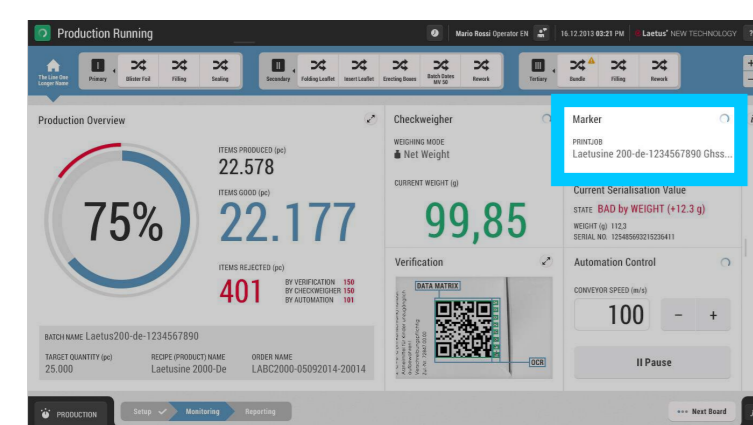
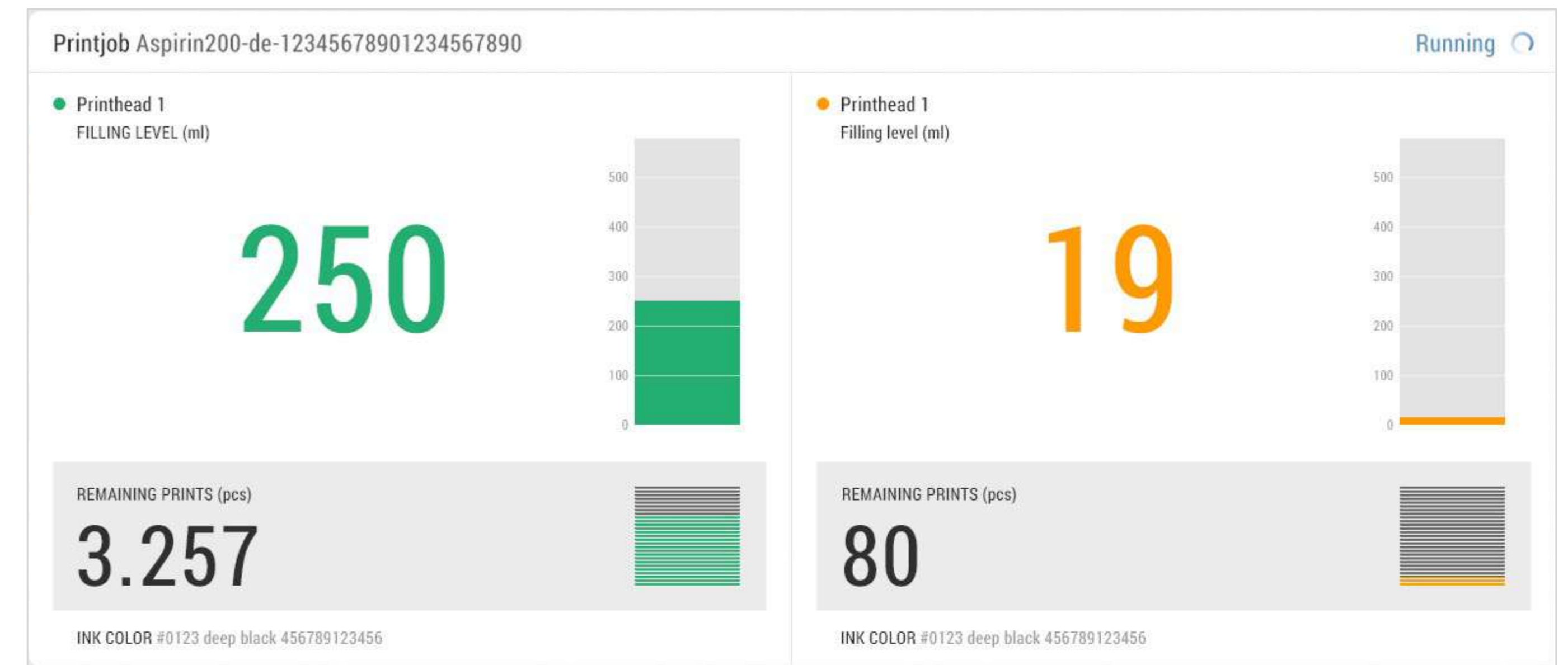
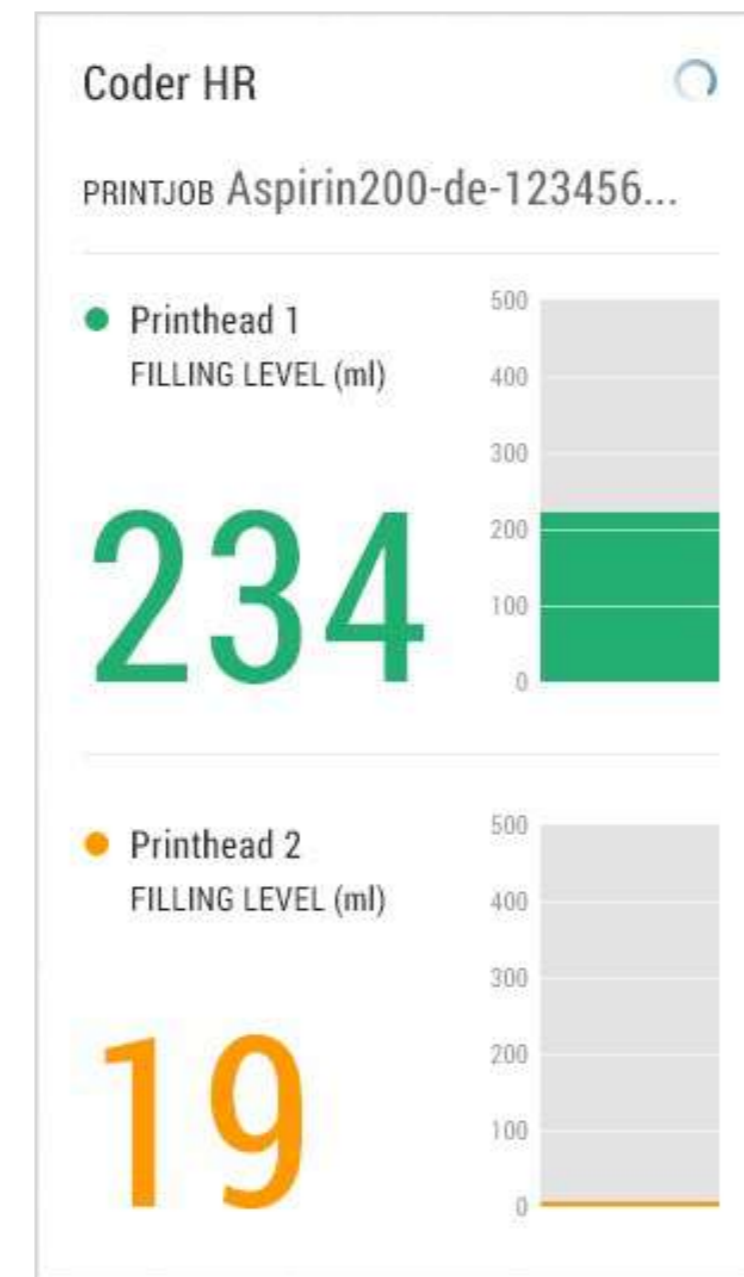


Real Machine Line



Abstract Machine Image

Modular Widget in different Sizes

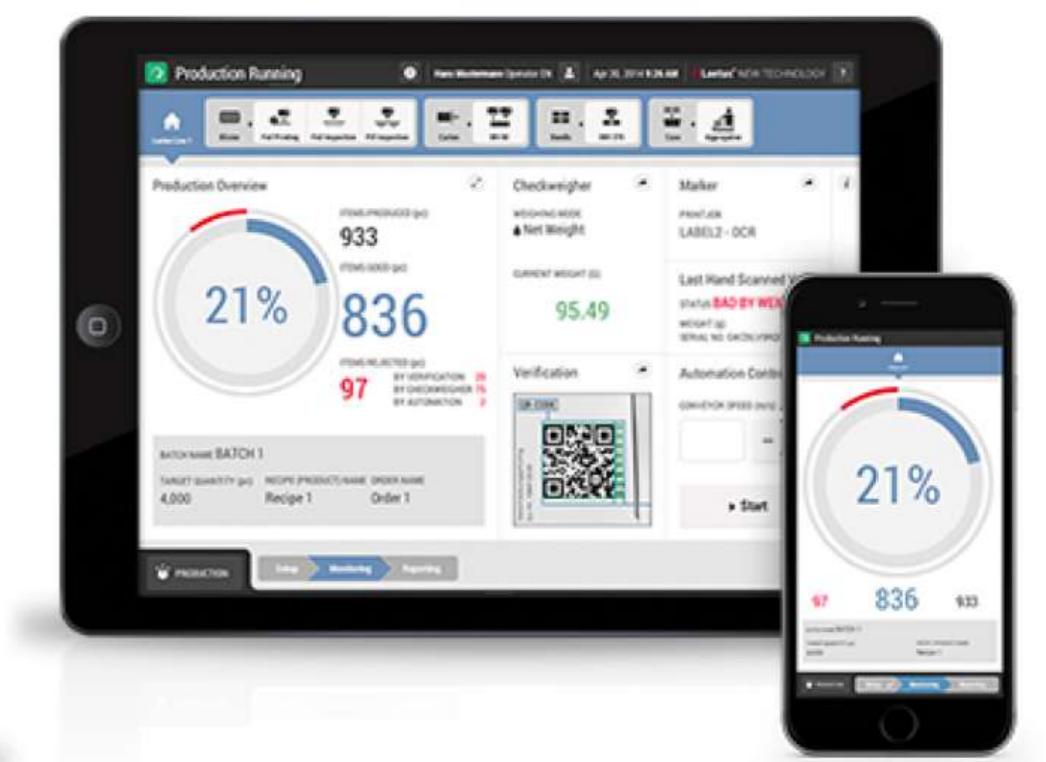
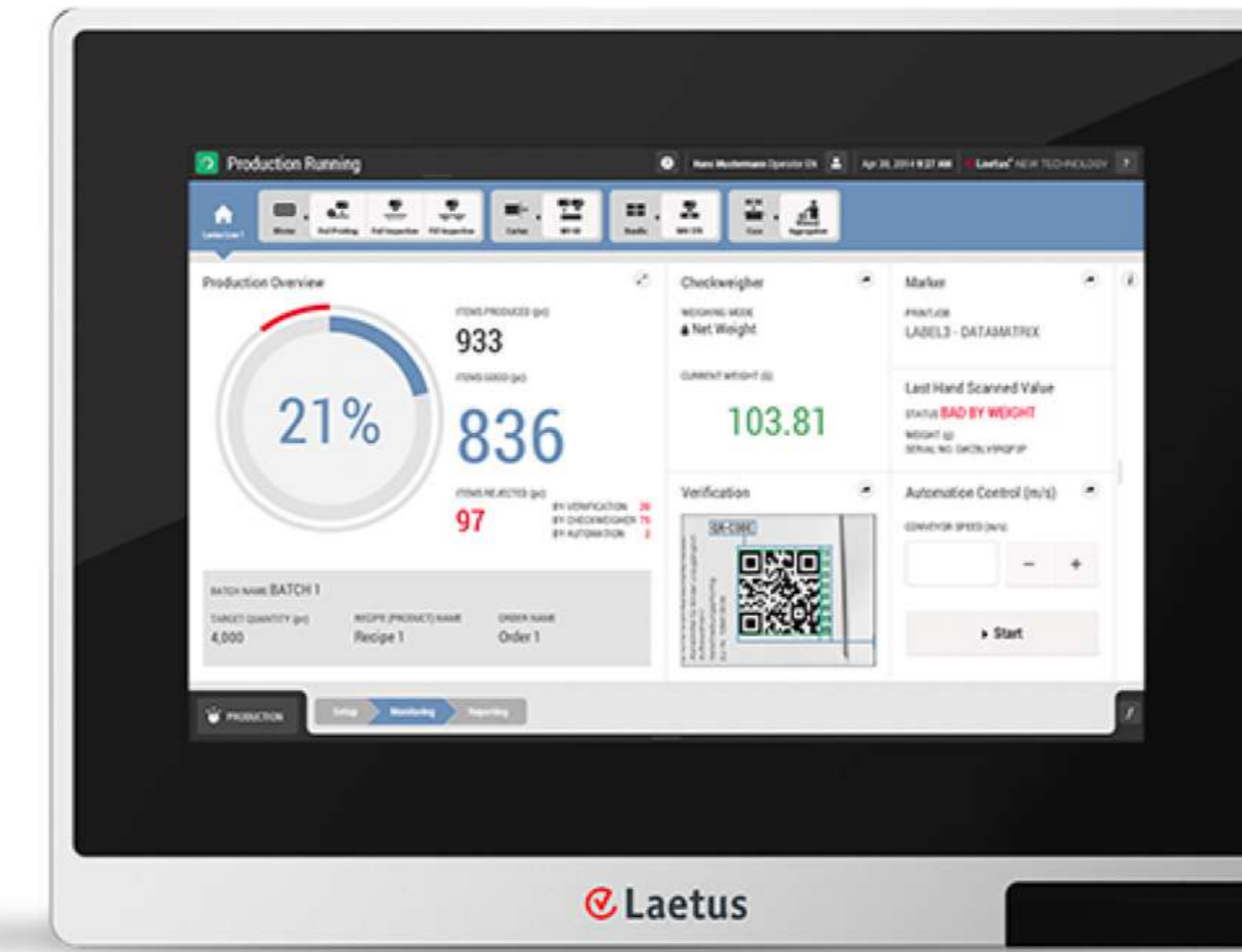
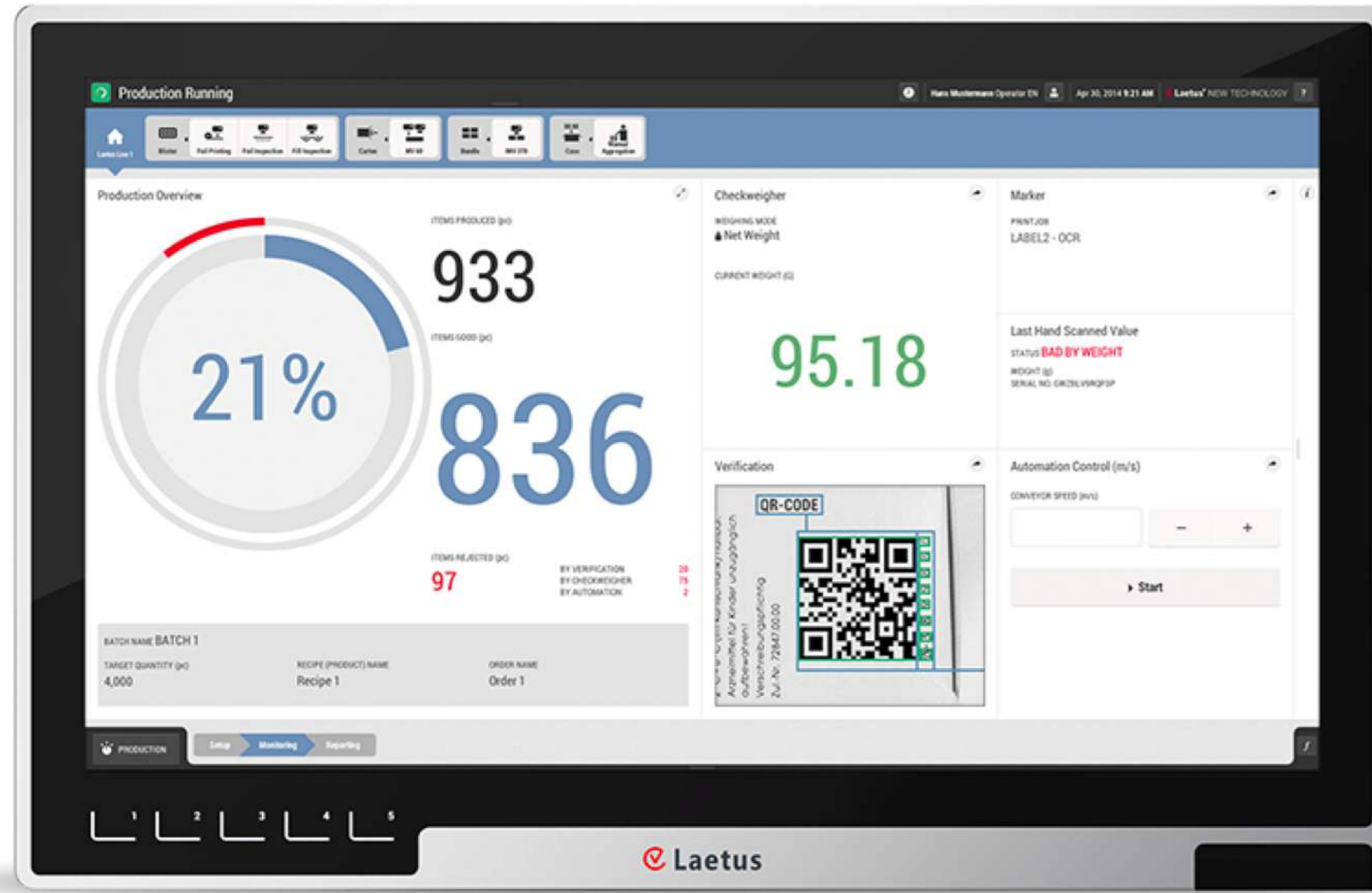


Flexibility

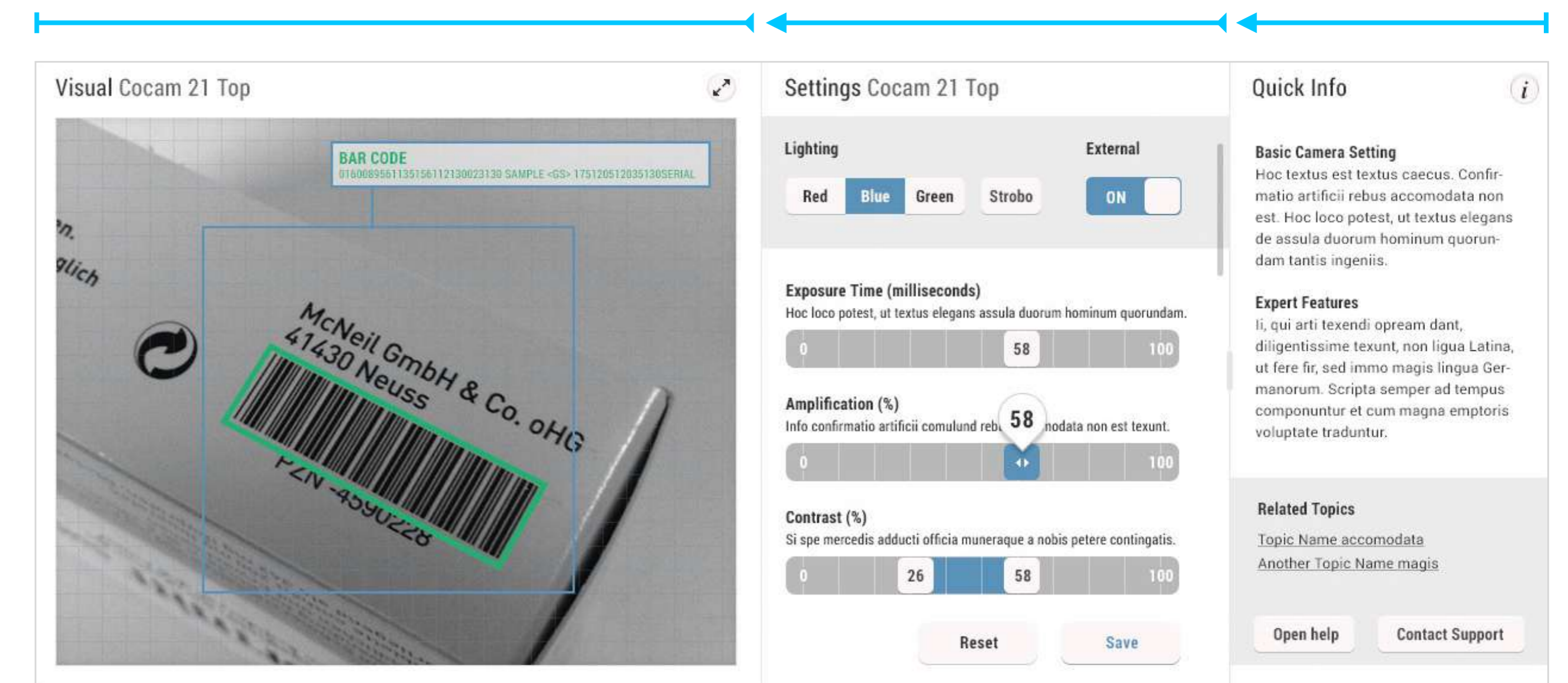
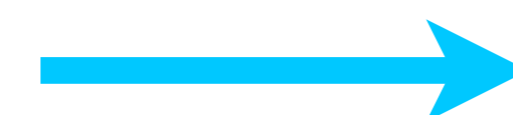
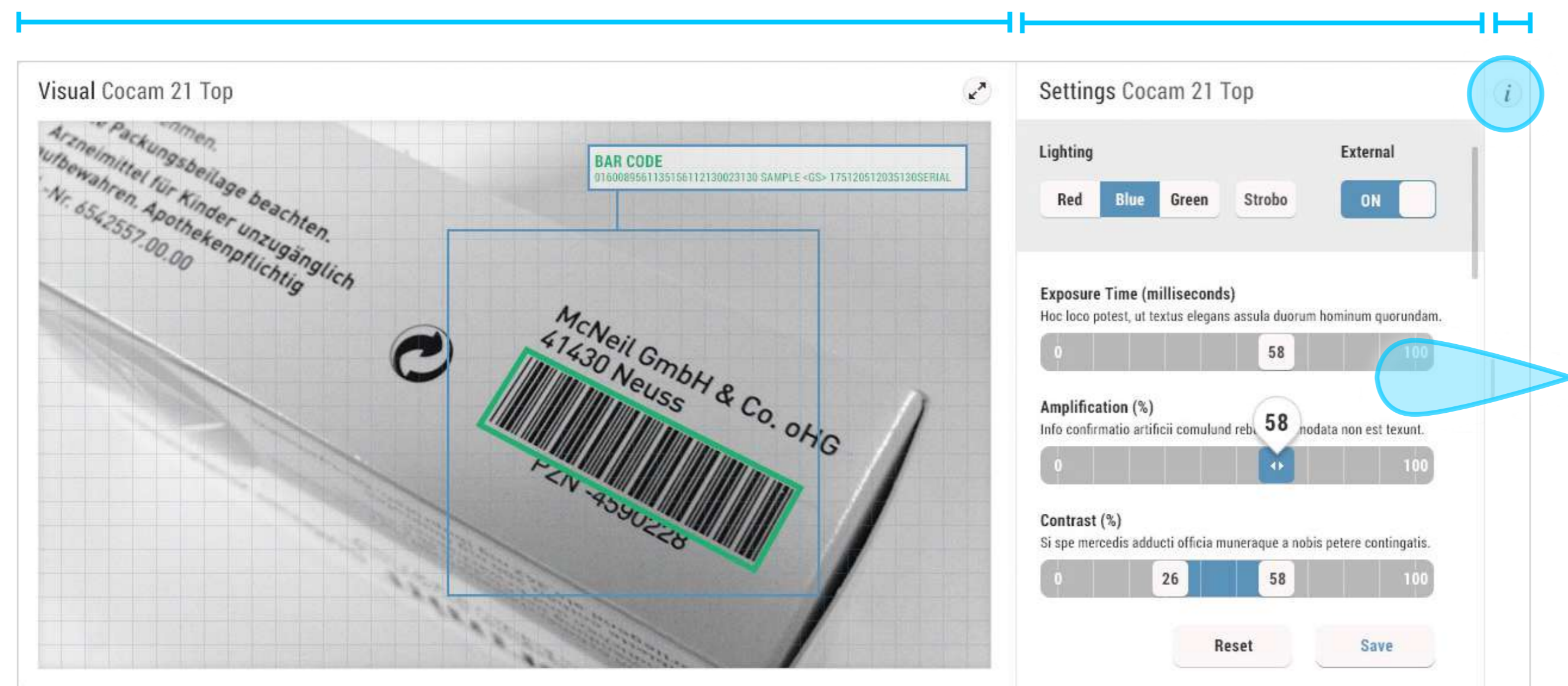
Responsive Design

- Adaptable to various Display-Sizes and Resolutions
- Automatic Auto-Adjustment to new Resolutions
- Optimized Use of available Screen Space

- Seamless animated Transitions between different States
- Well prepared also for small Resolutions (e.g. mobile Phones)



Panel-Range 21", 15", 12", 10" (Mobile Tablet) and 4" (Smartphone)



Responsive Behavior of Content Elements

User Interaction (Access Quick Help)

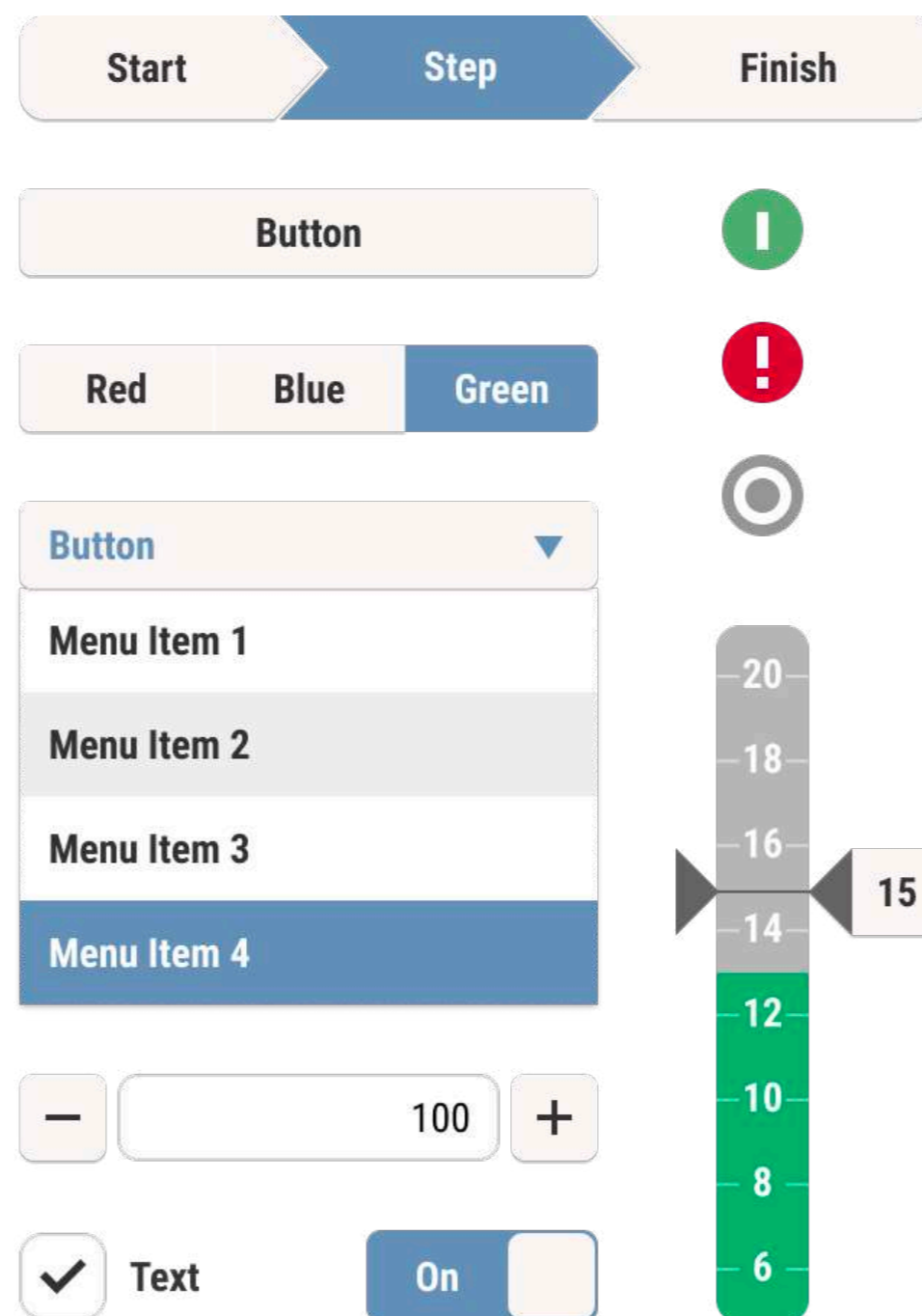
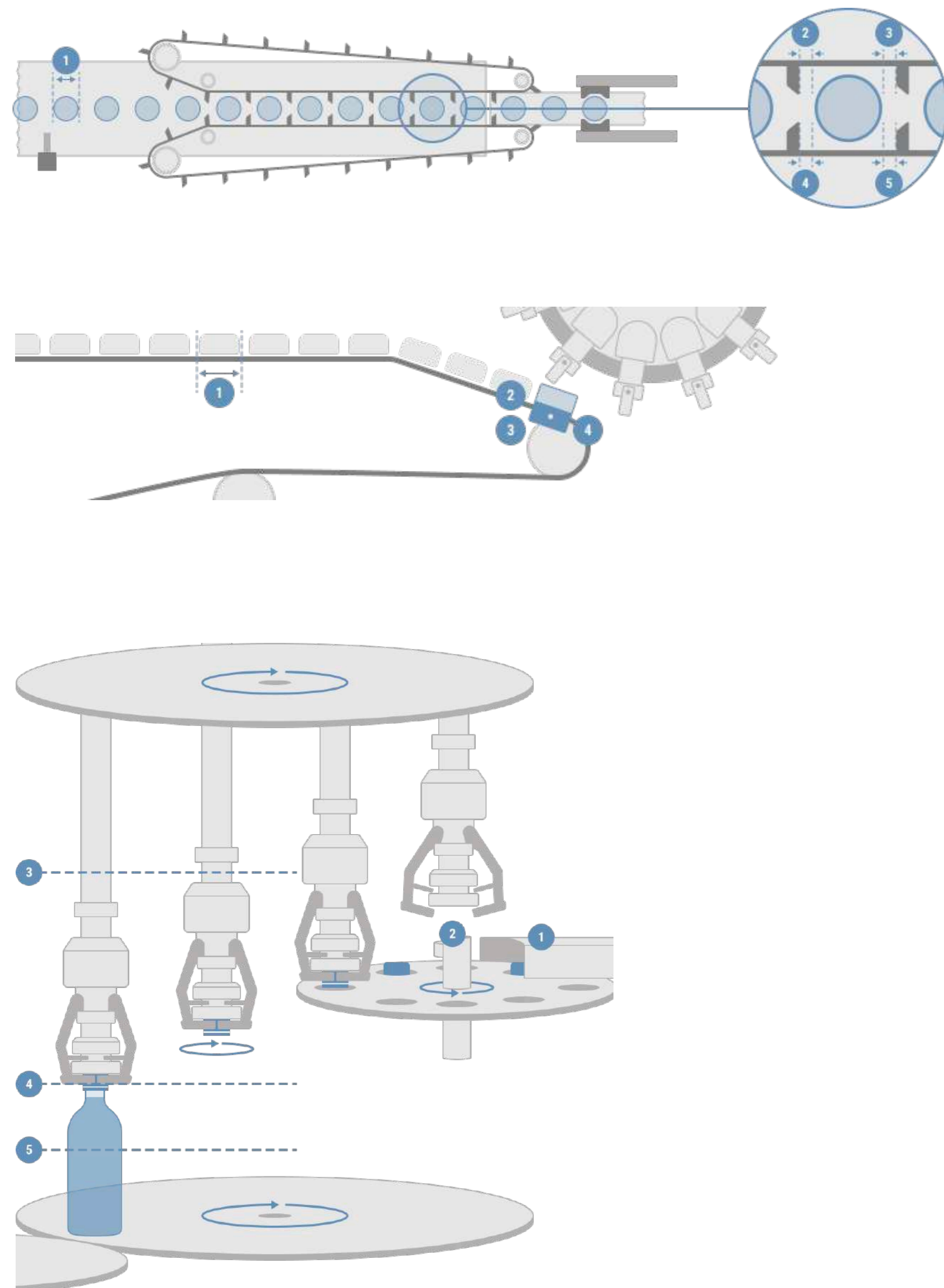
Corporate UI

Corporate Style Guide

- Large number of controls, illustrations, icons, design patterns and color definitions
- Characteristics and specifications are documented in a comprehensive styleguide

- Corporate UI style guide in the web-based design tool Figma
- Extensive component library
- Real-time collaboration with project managers

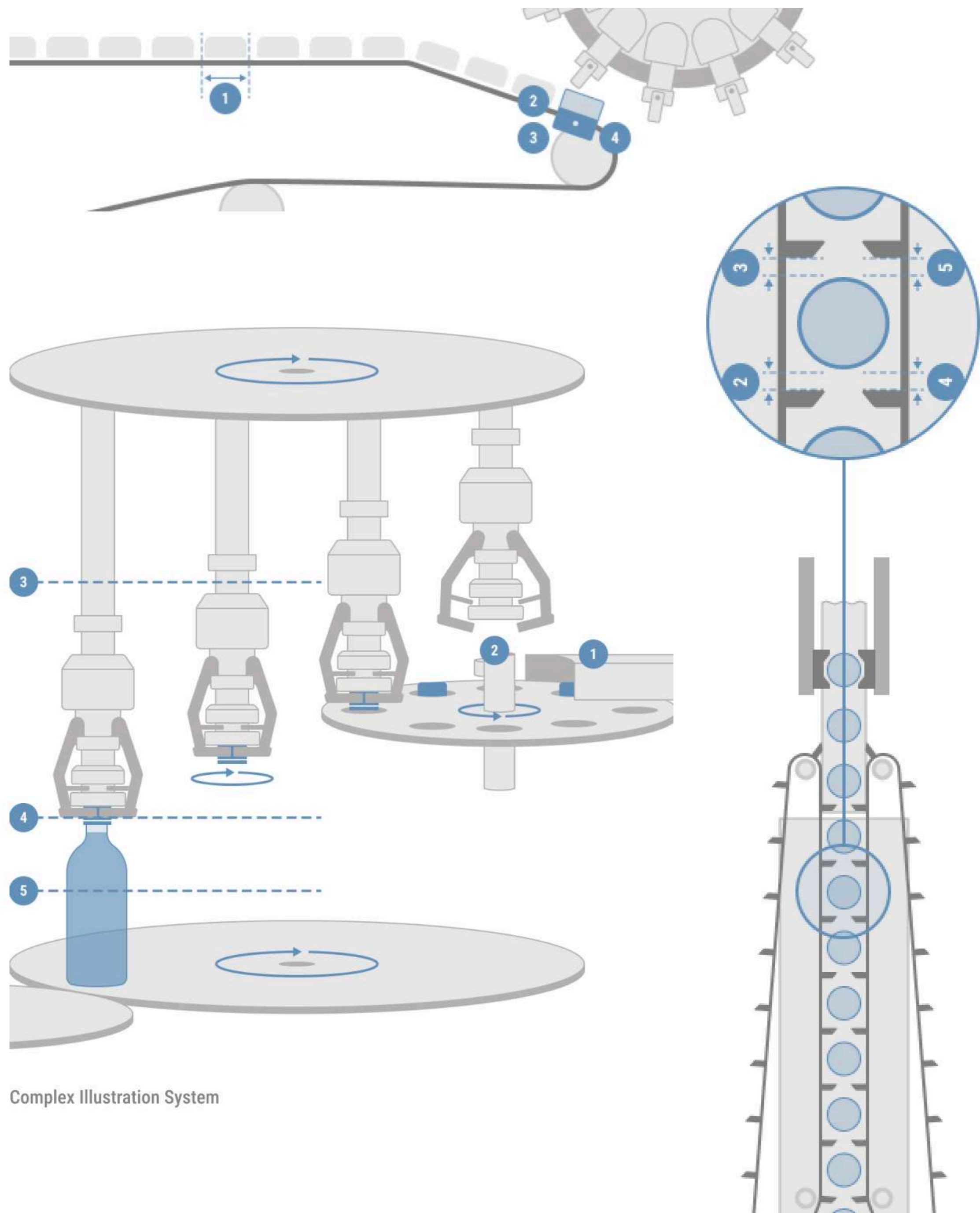
- Streamlines design process
- Shortens coordination rounds
- Transfers know-how from UX/UI to our clients



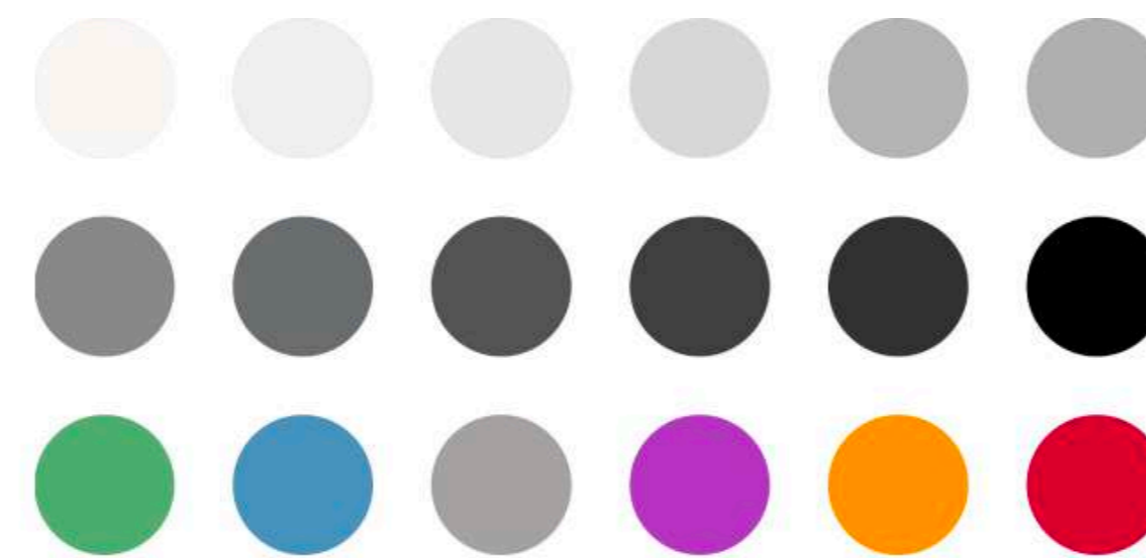
Corporate UI

Corporate Style Guide

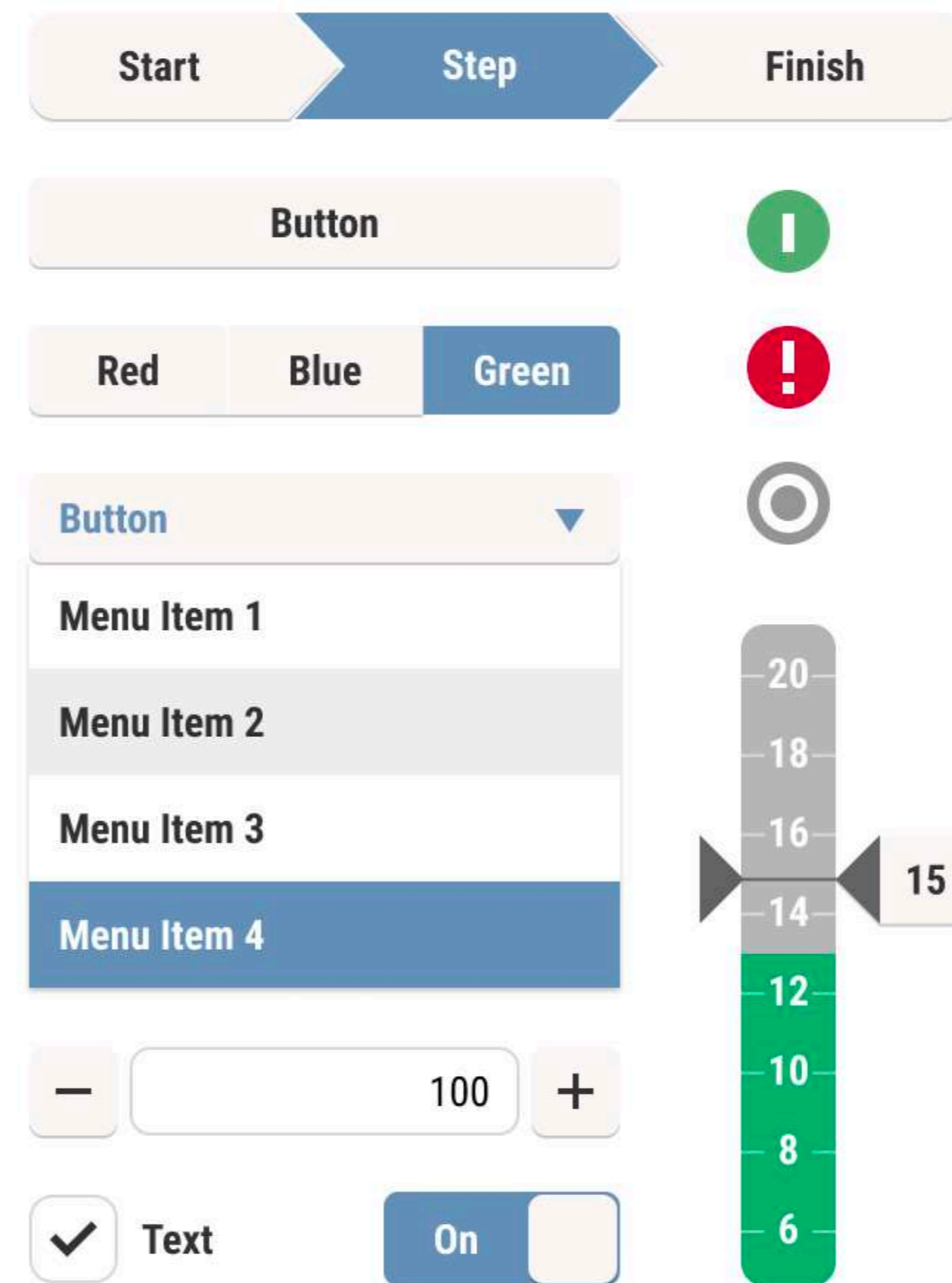
- Large number of controls, illustrations, icons, design patterns and color definitions
- Characteristics and specifications are documented in a comprehensive styleguide
- Corporate UI style guide in the web-based design tool Figma
- Extensive component library
- Real-time collaboration with project managers
- Streamlines design process
- Shortens coordination rounds
- Transfers know-how from UX/UI to our clients



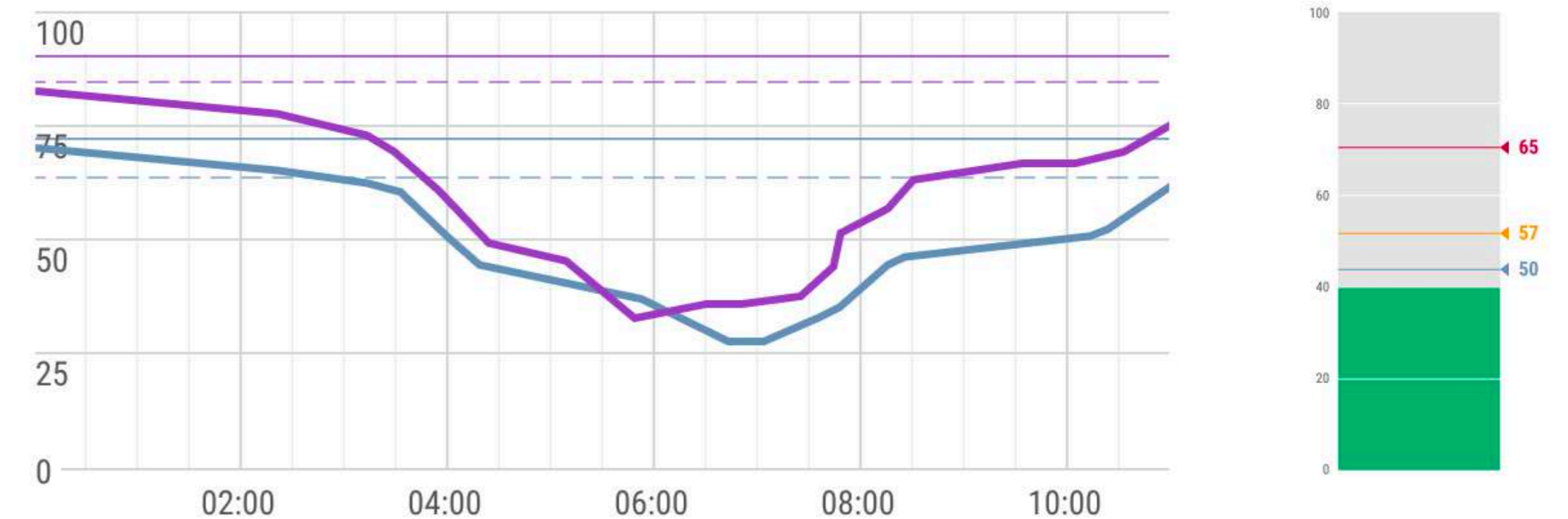
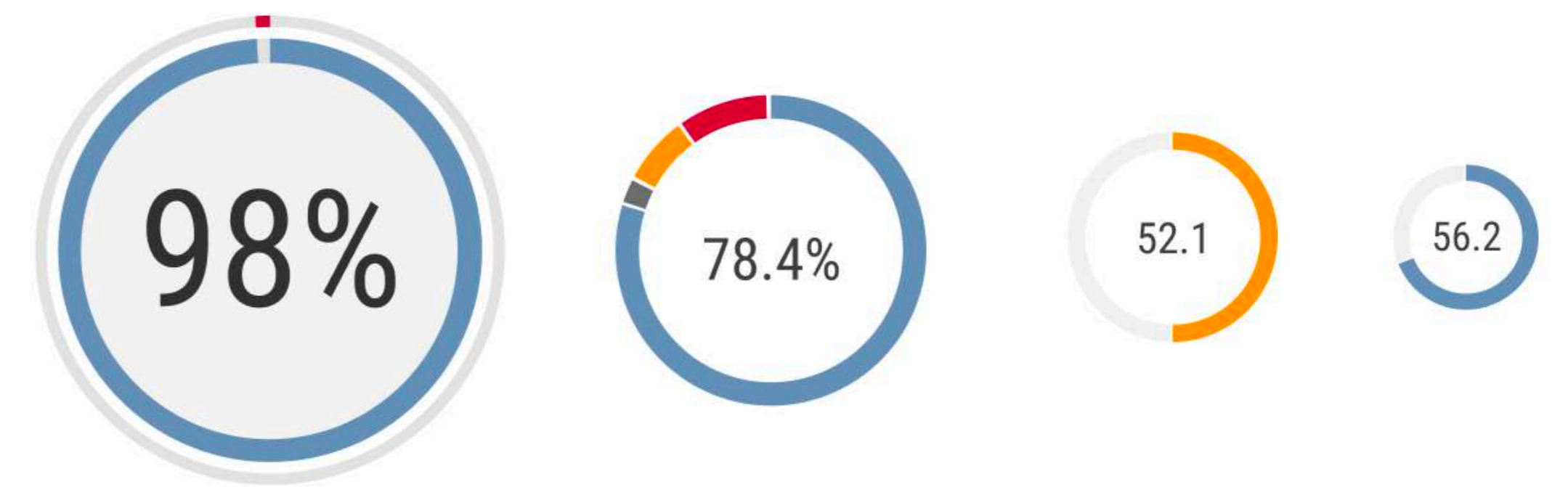
Complex Illustration System



Consistent Color System



Control & Component Library



Infographic Style



Icon Library

HMI Project GmbH / Frankfurter Straße 92 / 97082 Würzburg

T +49 931 453297-70 / hmi-project.com