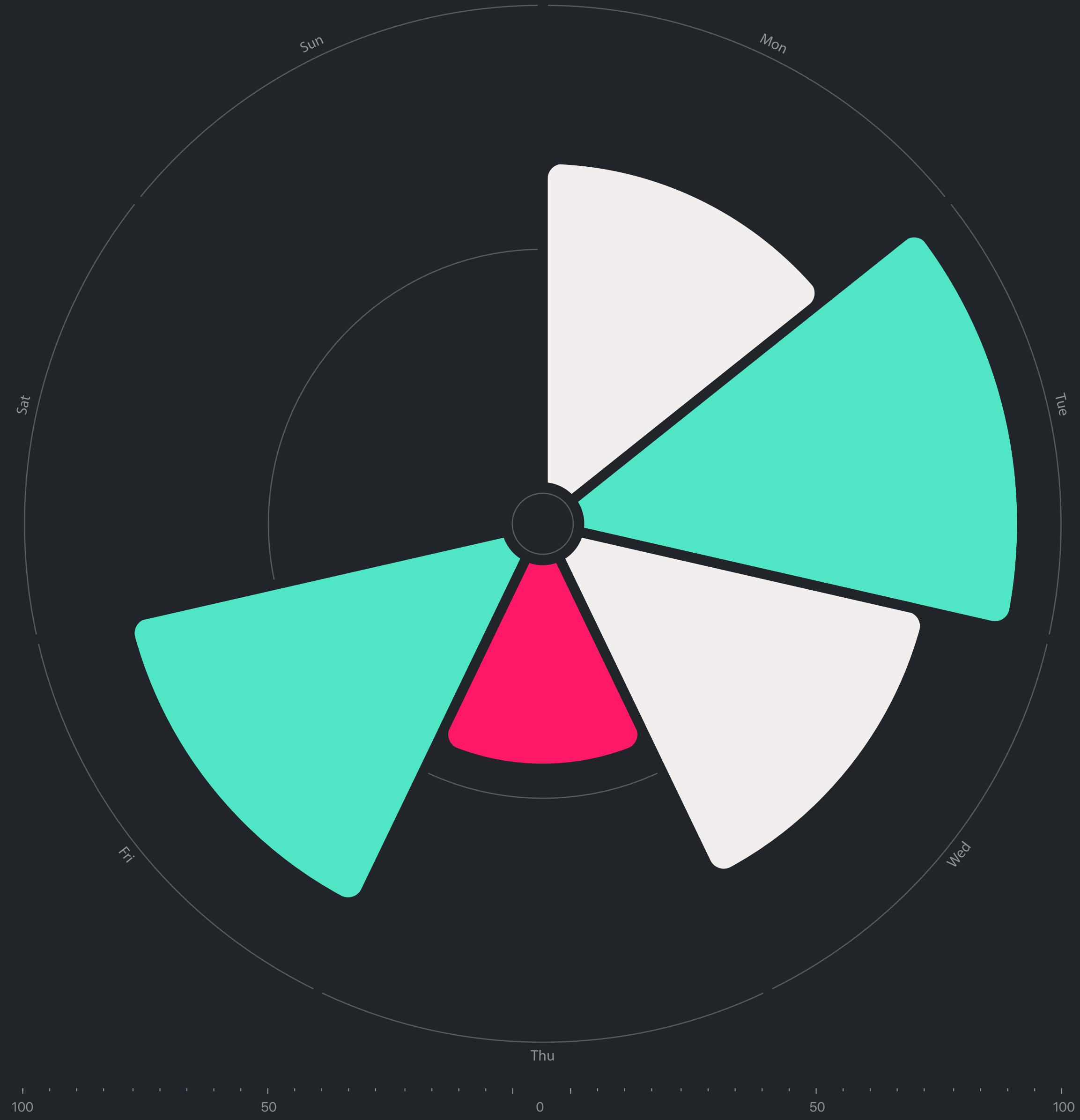


# Schneider Electric

## LMS Life

### Next Generation Line Monitoring System



# Starting Point

## Context

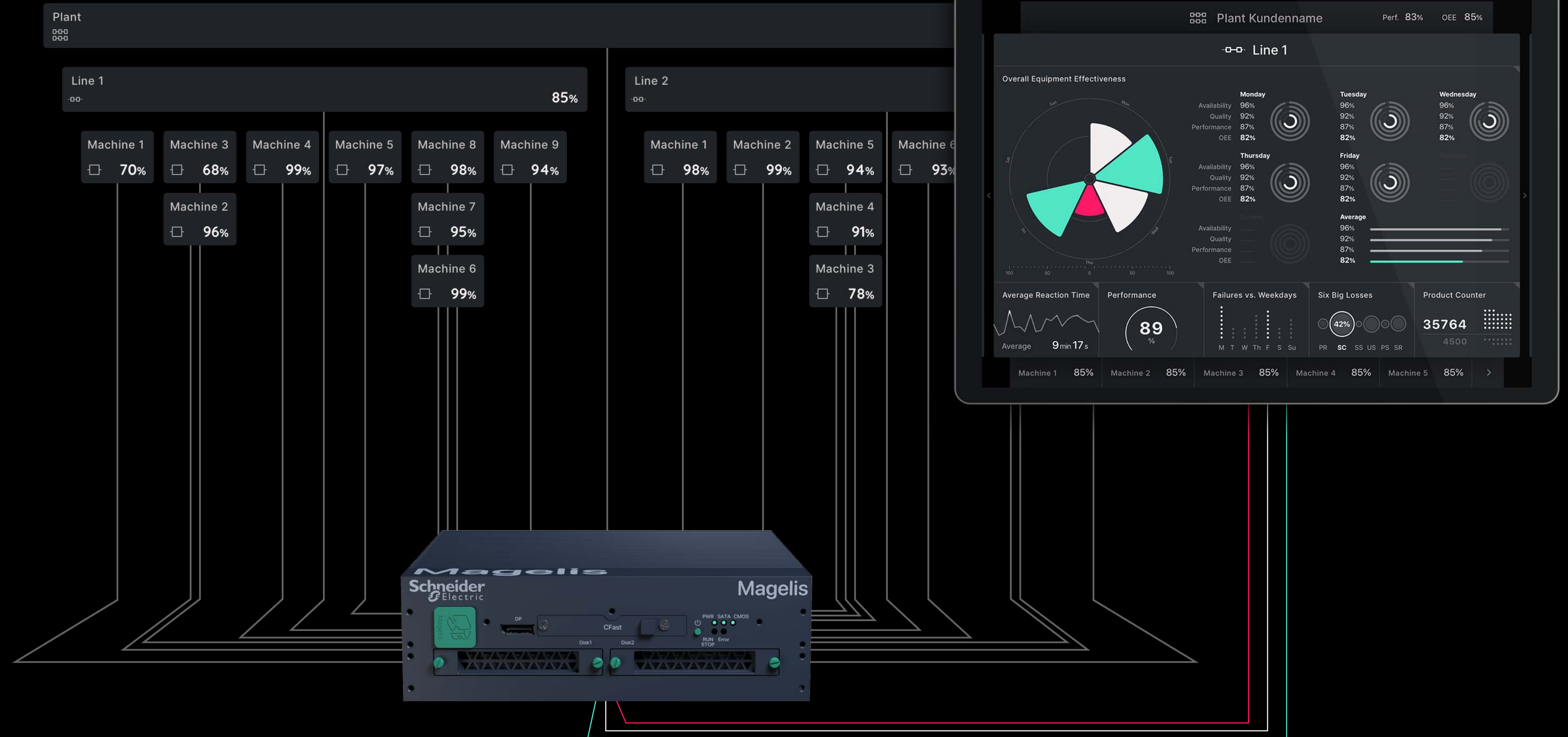
- Line monitoring system for smart data processing
- Industrial IoT application
- Collection and analysis of plant, line and individual machine production data
- Evaluations of OEE, performance, downtimes, etc.
- Target group: Plant and shop floor managers
- Support in determining potential for error reduction and production optimization

## Design Challenges

- Visualization of complex processes and bulk data
- Individual requirements for various types of analysis results
- Navigation in a complex plant structure
- Conception of usability-optimized analysis tools and features
- Application for a wide range of monitor sizes and touch devices



Industrial production environment



# User Experience

## Principles

- User-centered approach, optimized for the individual requirements of the user groups
- Rapid access to all information levels using intuitive navigation principles and gesture control
- Quick overview of important analysis topics via customizable dashboards
- Drill-down principle to switch from plant via line to the machine level
- Continuous monitoring of all aspects of the production process
- Analysis topics are bundled in widgets and are modularly applicable
- Easy to understand visualization of data via specialized infographics

### Global Background Level

With menu, settings, time range filter

### Plant Level

With client logo, plant name, widgets, etc.  
Cumulated data and evaluation

### Line Level

With current production, line name, widgets, etc.  
Horizontal navigation between several lines

### Machine Level

With lower-level single machines,  
Current performance, widgets, etc.  
Horizontal navigation between several machines

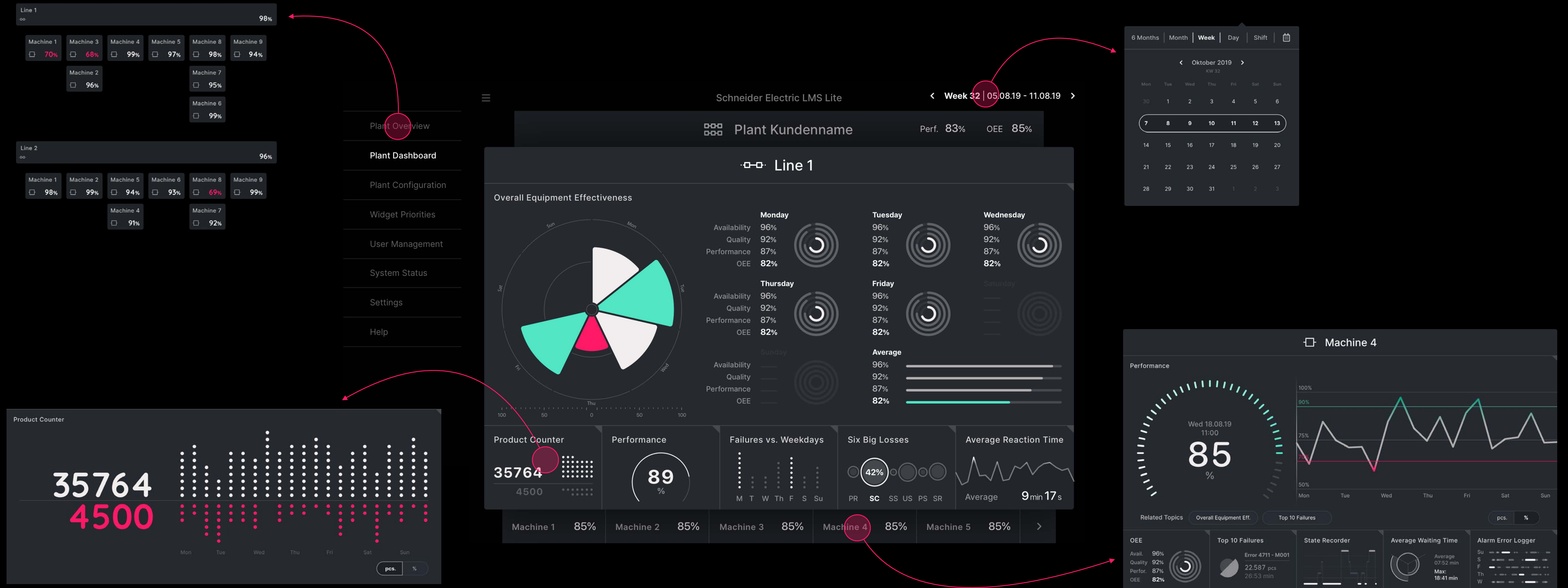


# User Experience

## Principles

- Setup of plant structure and configuration of dashboards
- Access to certain time frames and historical data via date picker control
- Easy-to-read data via customizable trends and specialized infographics

- Quick recognition of correlations and error reasons through smart filters
- Further research options via cross-links and compare functions
- Clear visualization of the plant structure



# Design System

## Principles

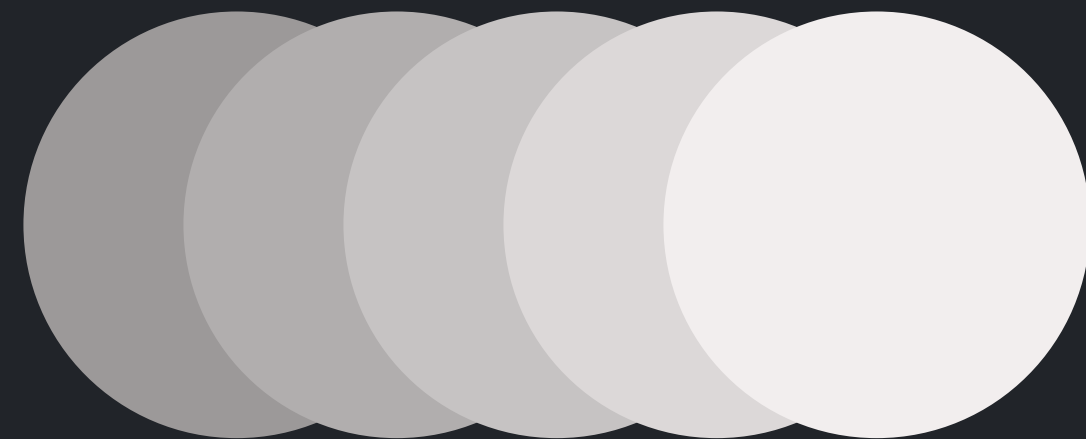
- Esthetic and reduced graphic style, focused on the visual information
- Simple structures and clear contrasts
- Consistent color concept for quality structuring of all key-performance-indicators

- Functional and self-explanatory controls
- Individually selected, easy-to-read trends and infographics
- High quality overall appearance

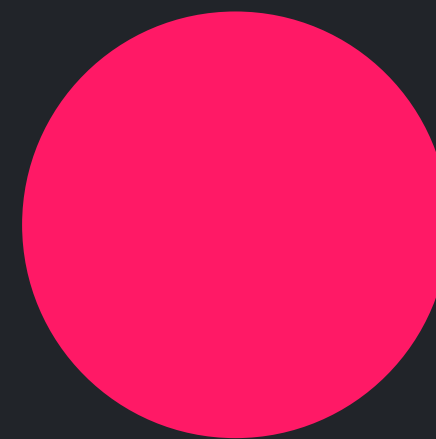
Color Code



Very Good

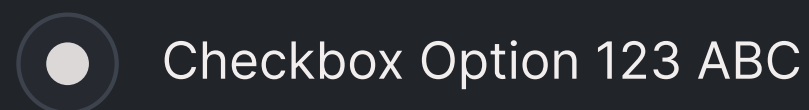
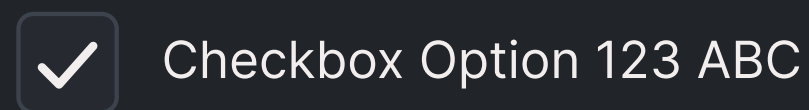
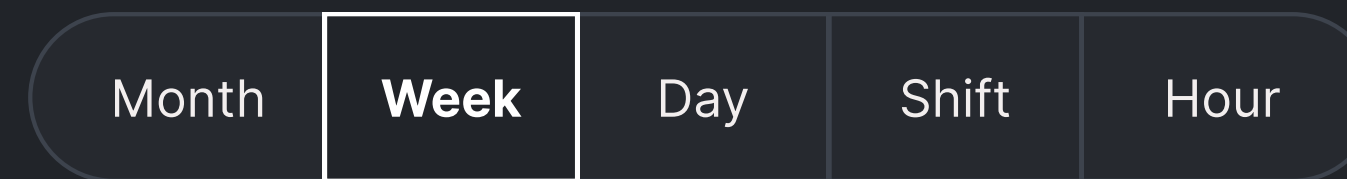
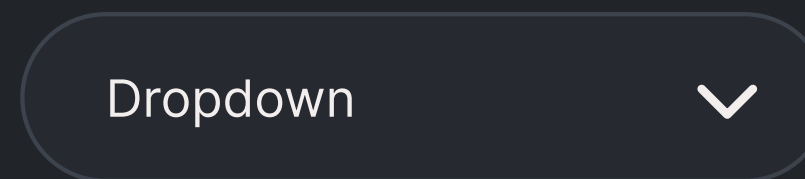
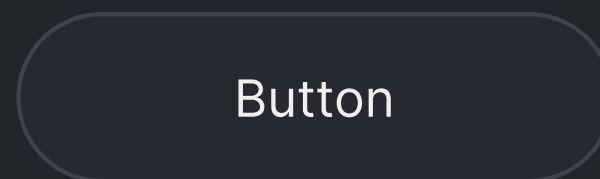


Okay

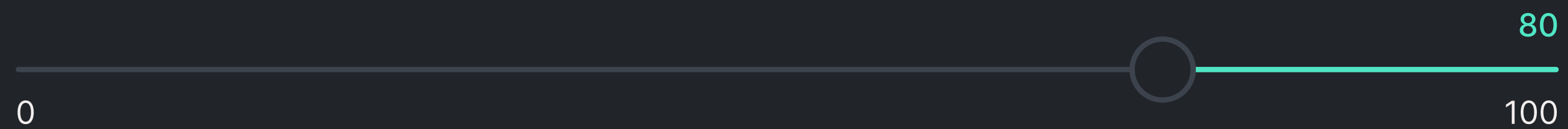


Bad

Controls, Icons, Graphic style



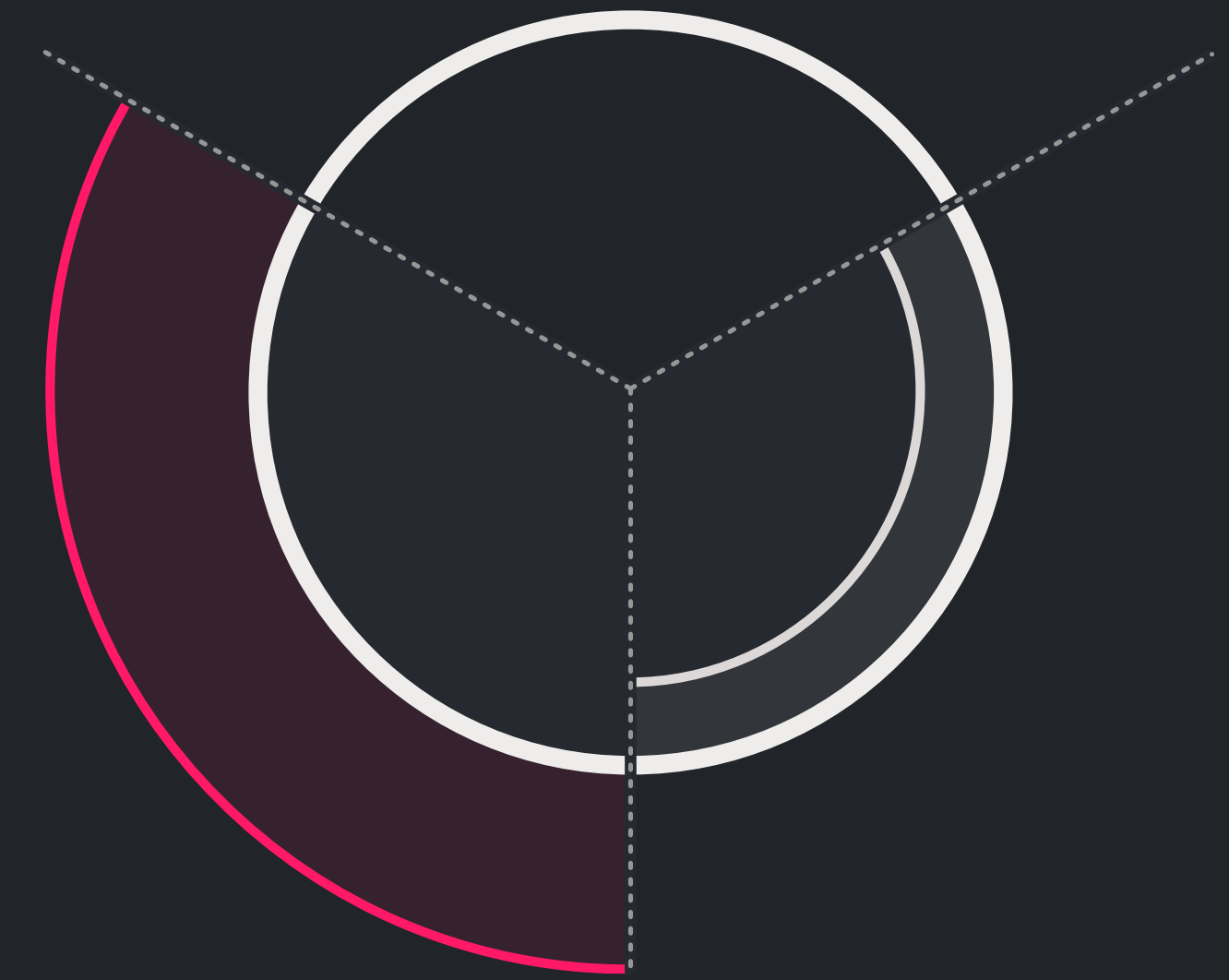
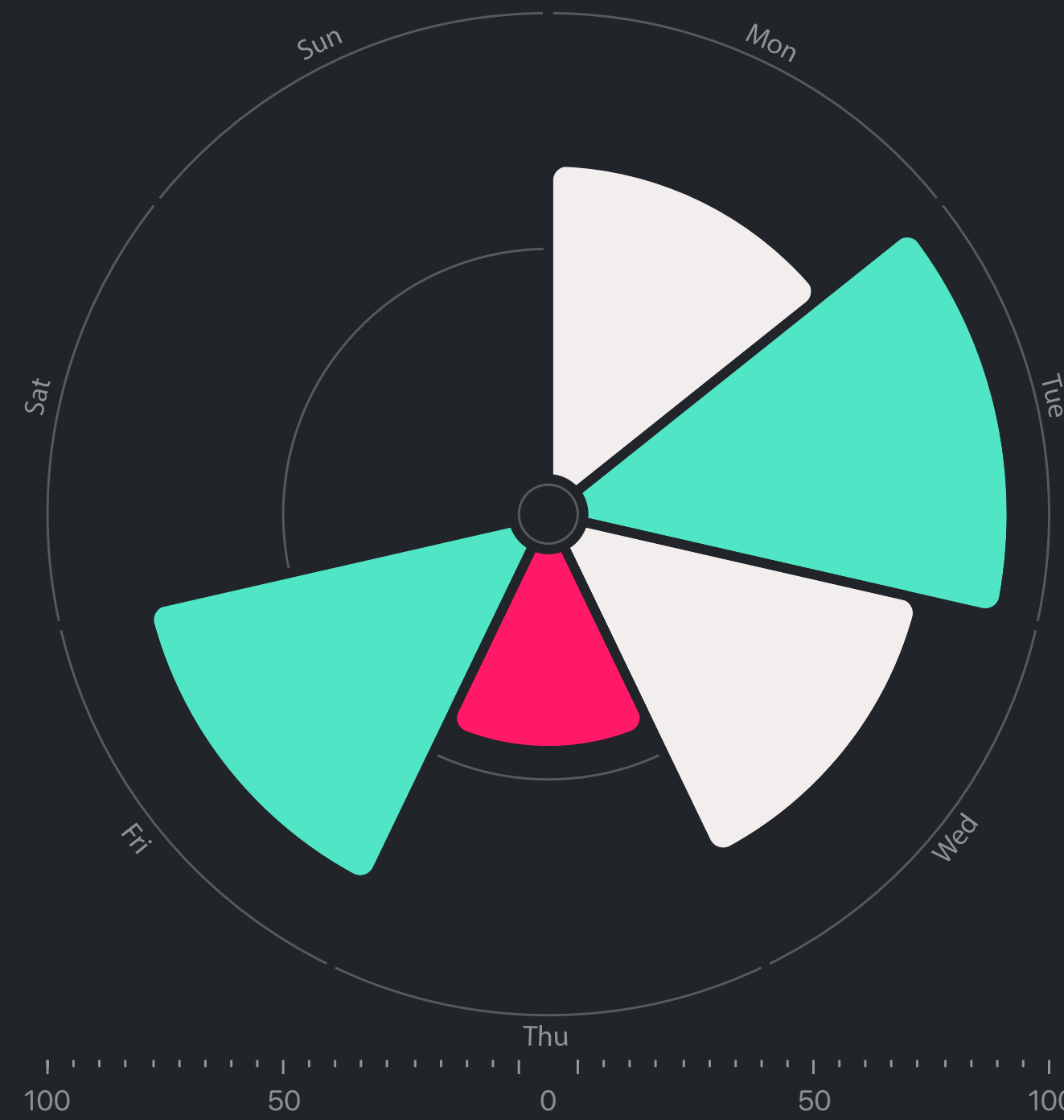
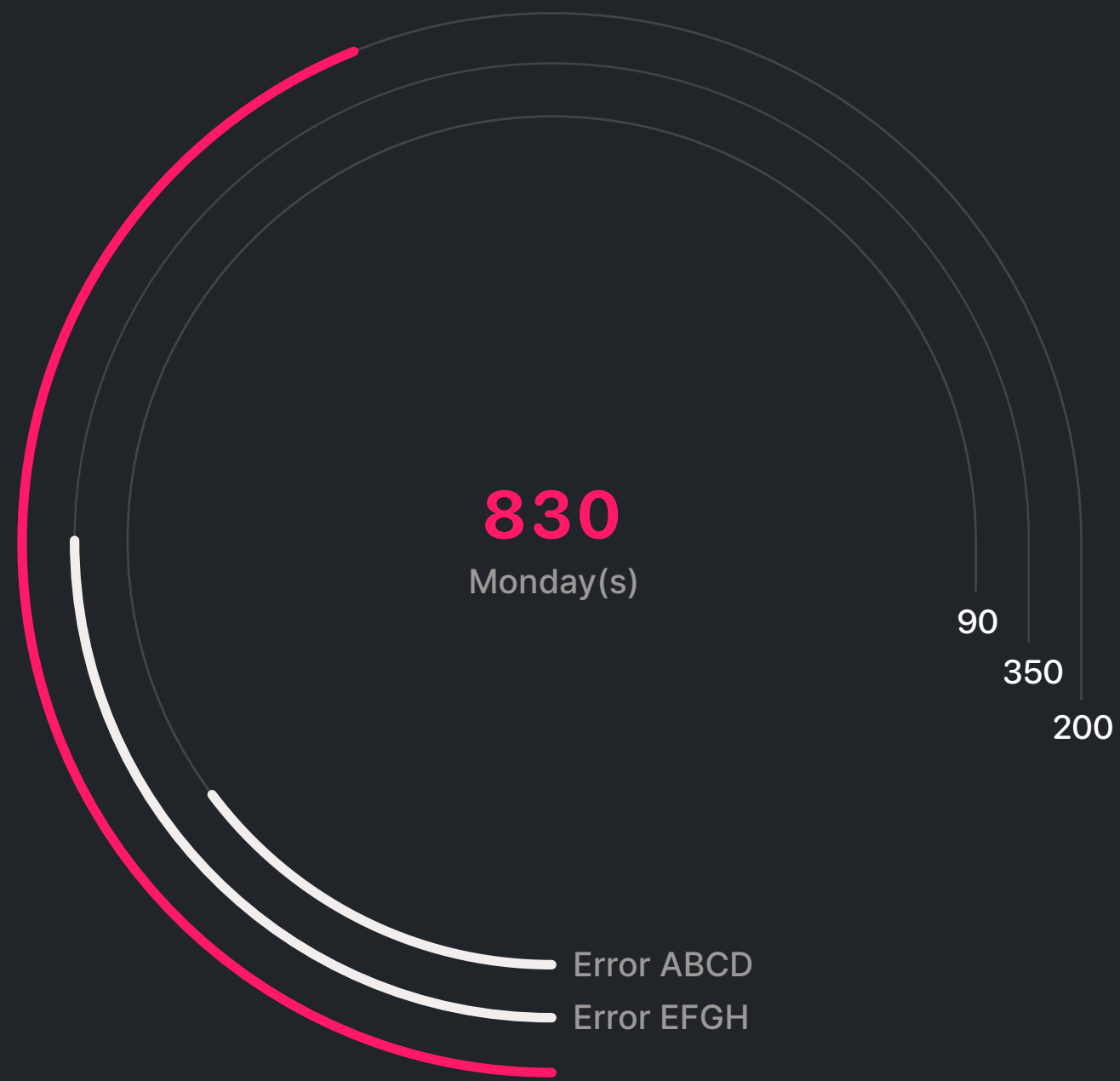
Slider Range



# Infographics

## Principles

- Numerous visualization types, individually selected for each analysis topic
- Display appearance optimized for required information content
- Various levels of detail, depending on application
- Flexible display sizes and responsive adaptation to available screen resolution

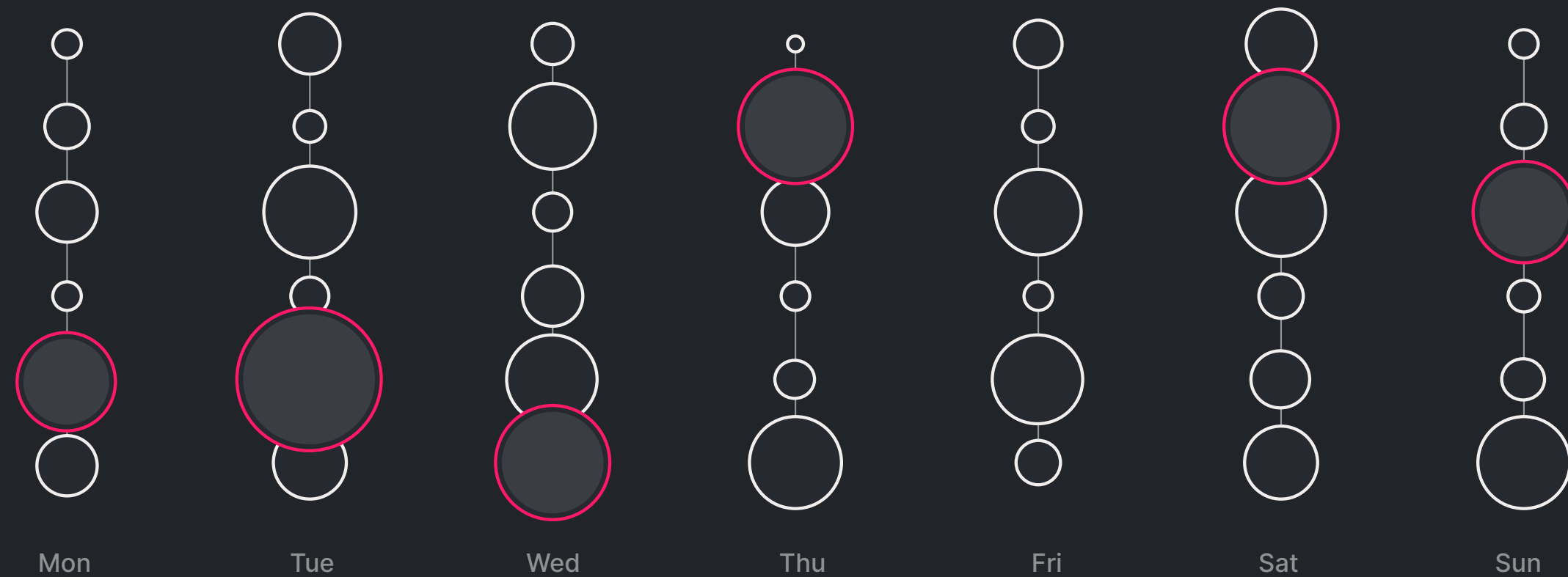
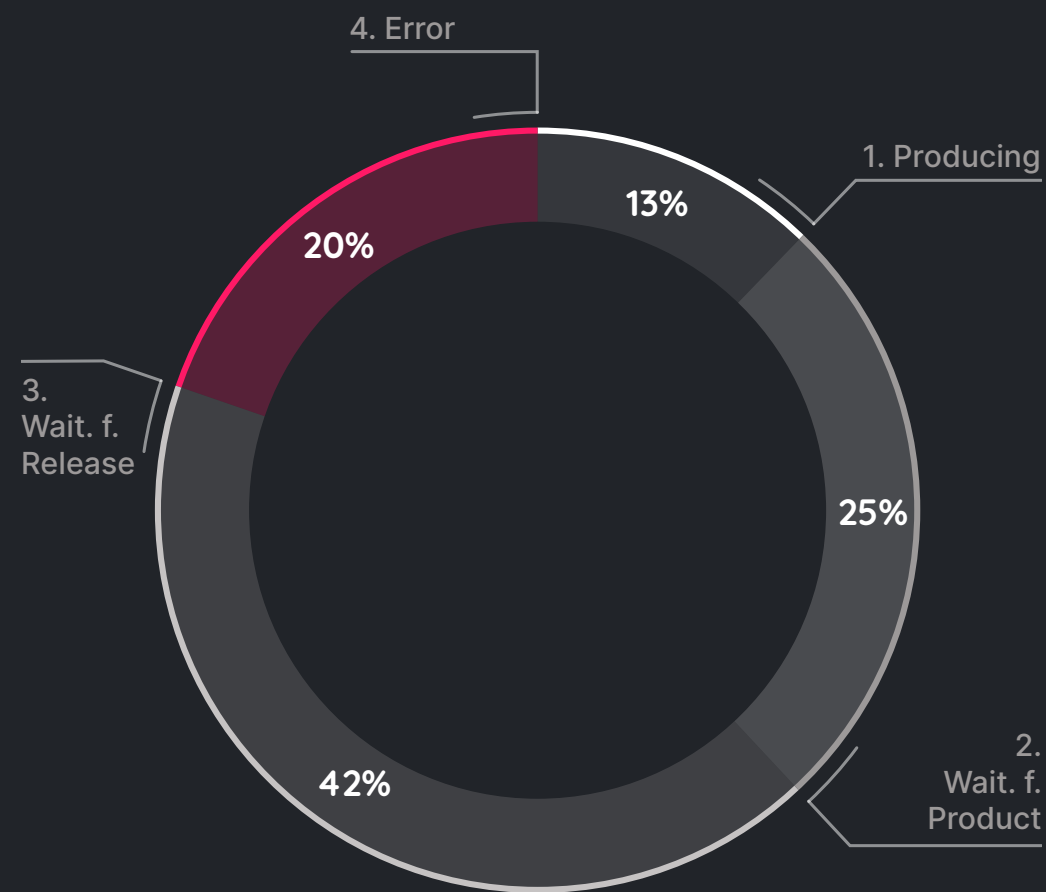
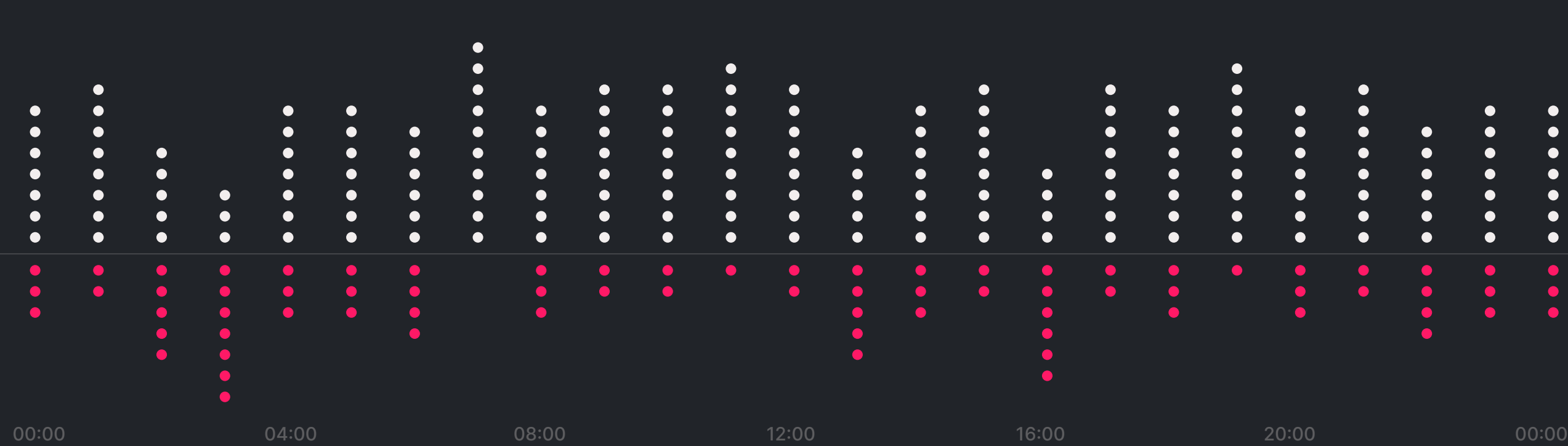


# Infographics

## Principles

- Consistent graphic style with simple and clear geometric shapes
- Characteristics are enhanced by establishing animations
- Limits and visual highlights can be configured by the user

73.3%  
26.7%



# Responsive Design

## Principles

- Developed with the latest web technology
- Designed for multiple device types and panel sizes
- Applications: master control displays, PC workstations through to tablets and smartphones
- Mouse as well as touch-optimized operation
- Numerous multi-touch features
- Scalable, responsive behavior of framework, widgets and infographics
- Grid-based application automatically adapts to device types and screen resolution



Multi-device column grid system

Device overview

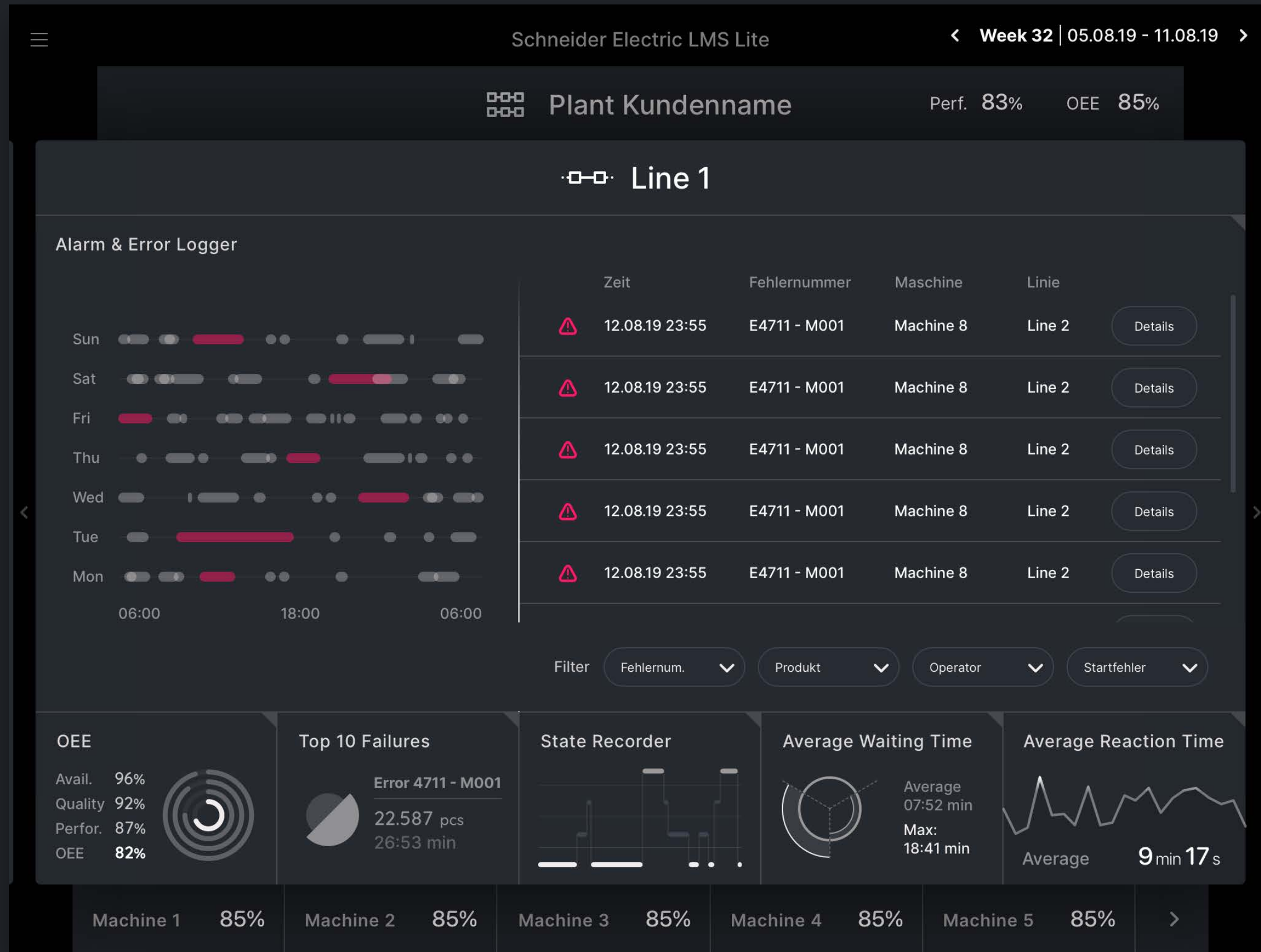


# Features

### Additional Functions

- Integrated contextual help
- User and access management
- Light theme for printing of reports
- Screensaver with characteristic OEE visualization

- Customizable client branding, plant structure and dashboard configuration
- Entry point for paperless office approach
- Expandable widget library
- Admin tools for system setup and commissioning



Advanced widget customization



Overall error management and evaluation

Structural overview of complete plants and lines



HMI Project GmbH / Frankfurter Straße 92 / 97082 Würzburg

T +49 931 453297-70 / F +49 931 453297-71