

KAMCOS 2.0

Touch-optimized User Interface Design
for Textile Machines

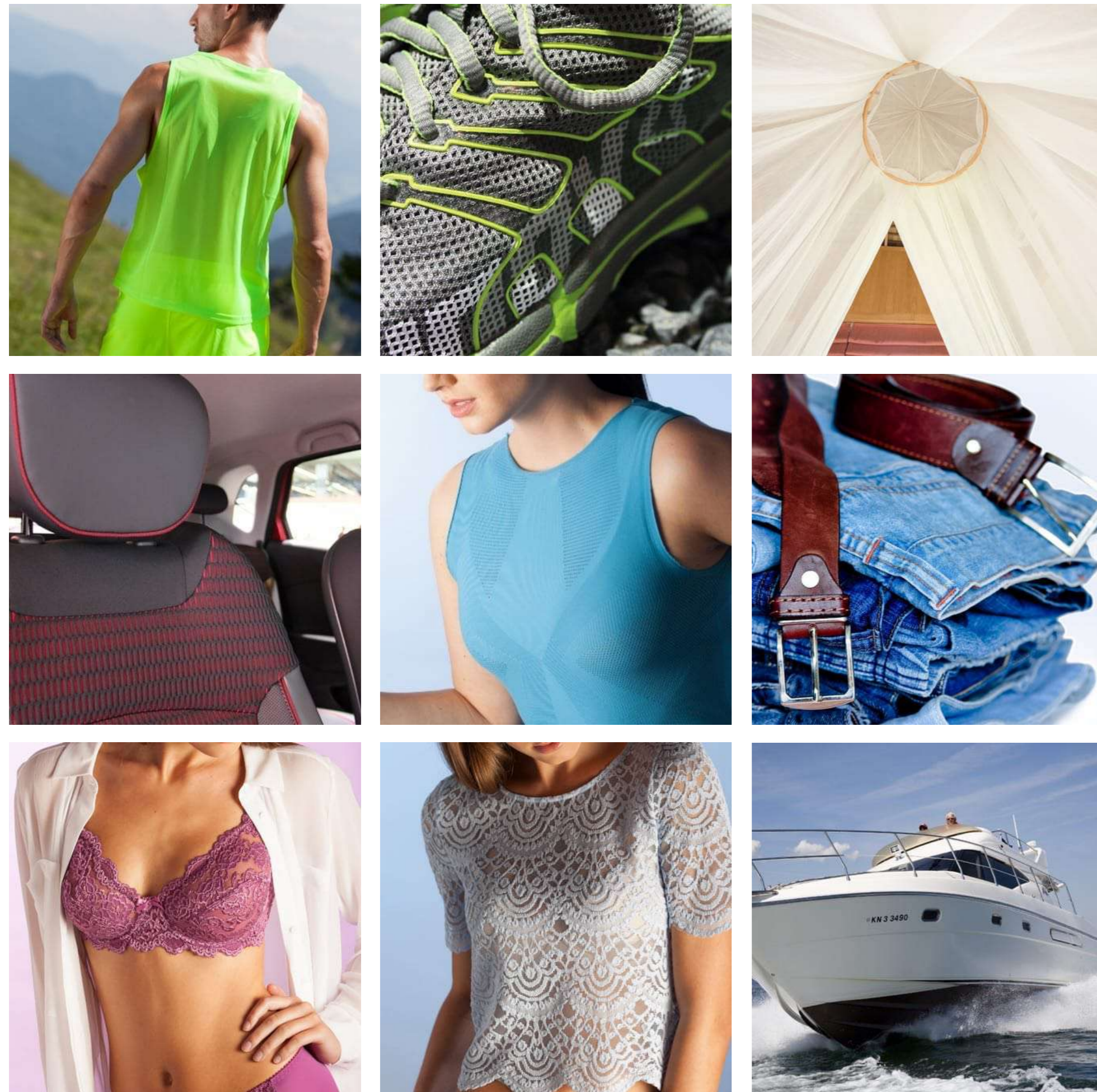


Starting Point

Industrial Context

- Controlling Textile Machines for Warp Knitting, Technical Textiles and Warp Preparation Units

- Wide Range of Technologies, Machine Types and Functions



Final Products (Examples)

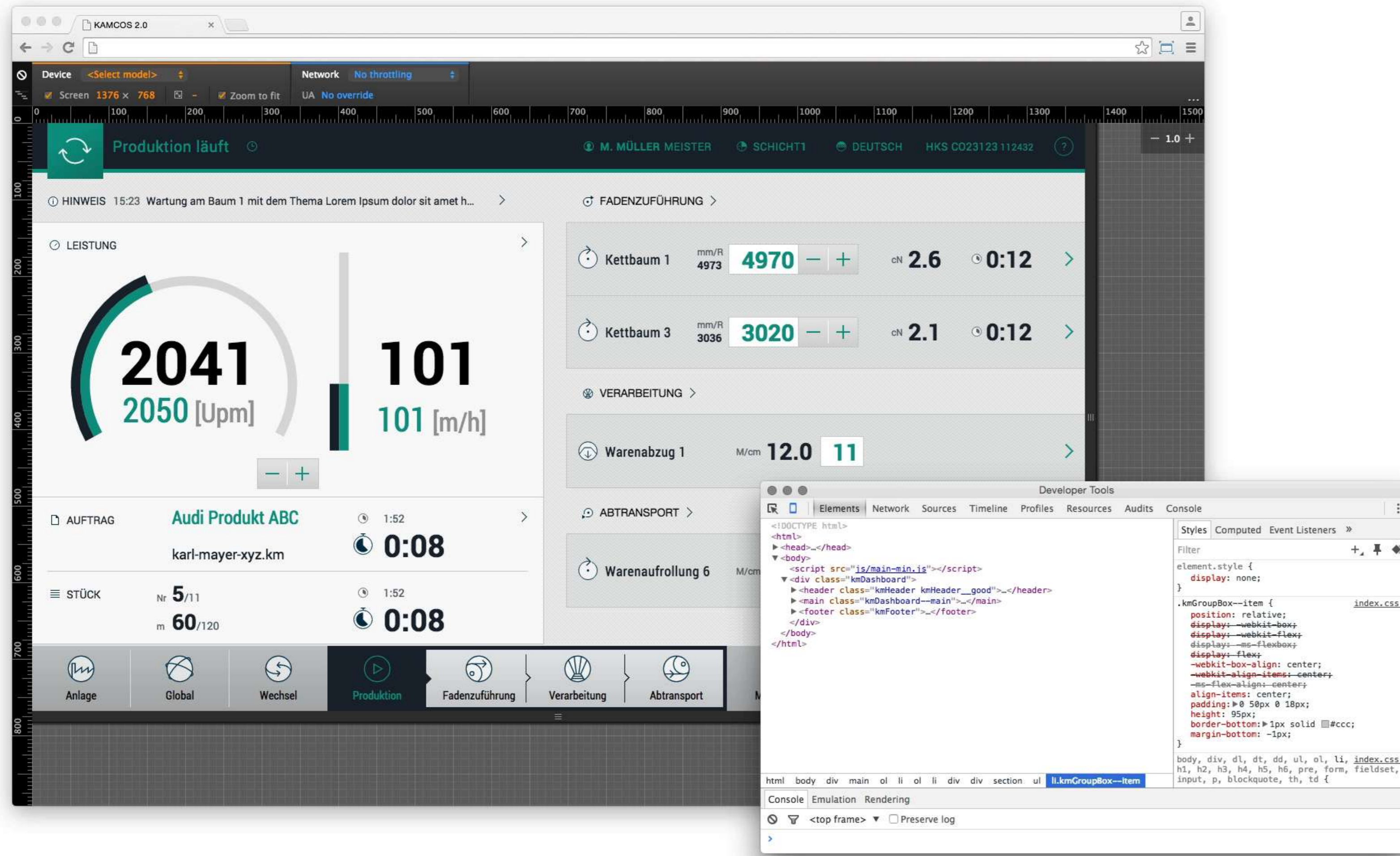


Standard Trikot Machine



Machine Type Variations (Examples)

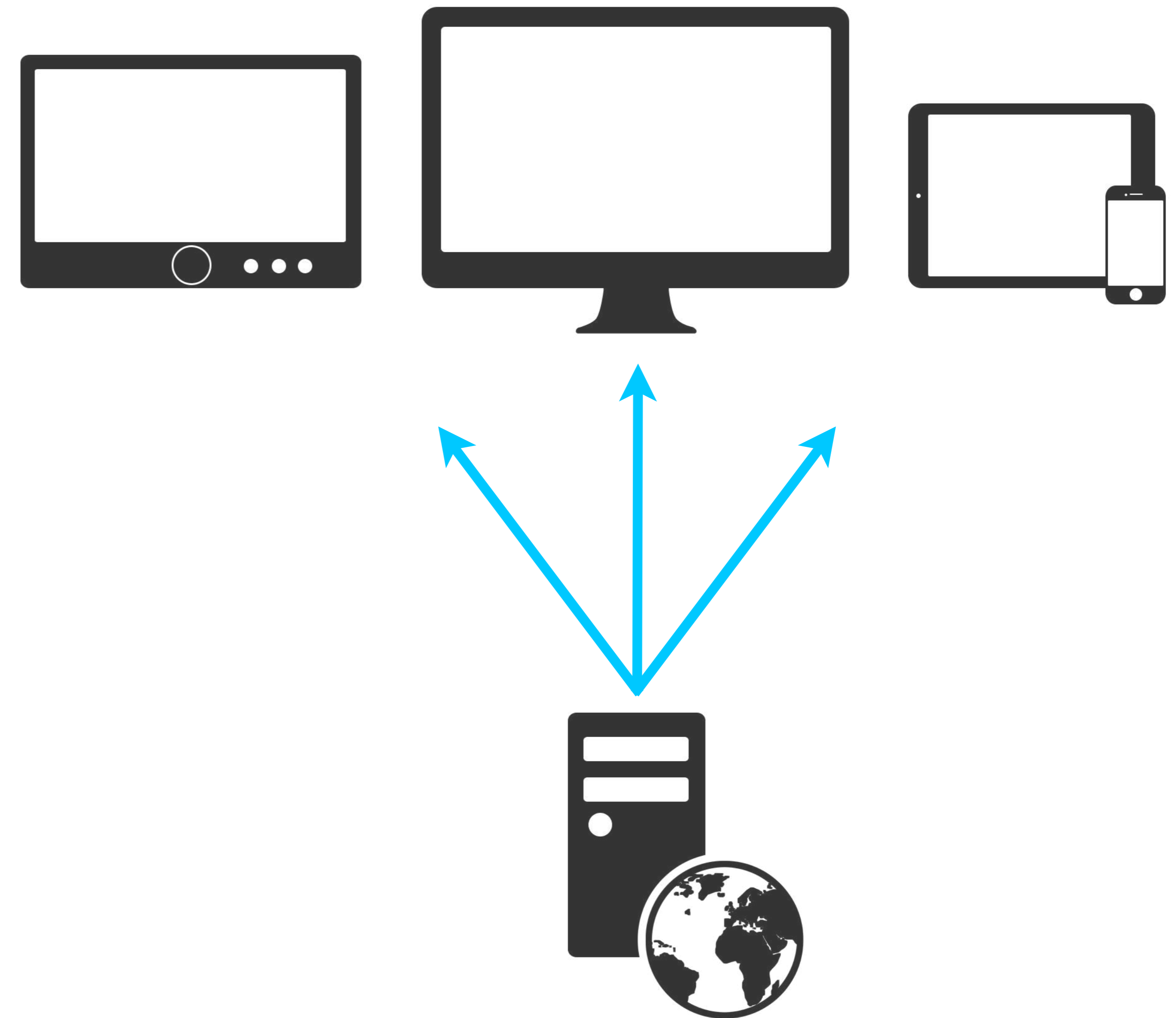
Web Technology



Client Server Architecture

- Consistent Browser based Display
- Independent from Operating System
- Scaleable, dynamic UI

- Modular Component Architecture
- Easy Support of various Display Sizes and mobile Devices



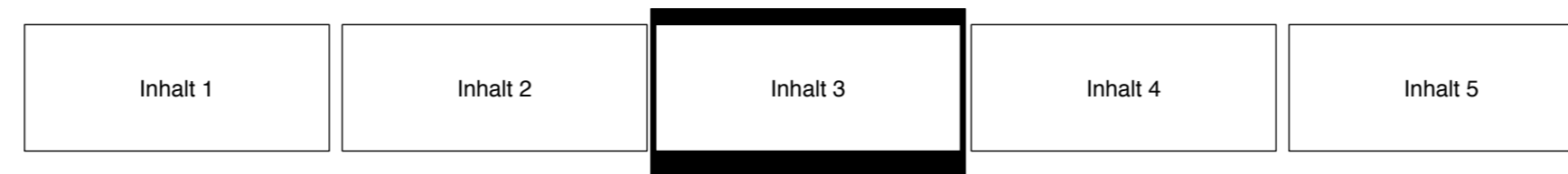
Global Operation Concept

Interaction Principles

- User-oriented Universal Operating Concept
- Customizable Dashboard for Monitoring
- Process-oriented Views and Navigation
- List-based Organisation of Maschine Modules
- Functional Animations



Functional Animations



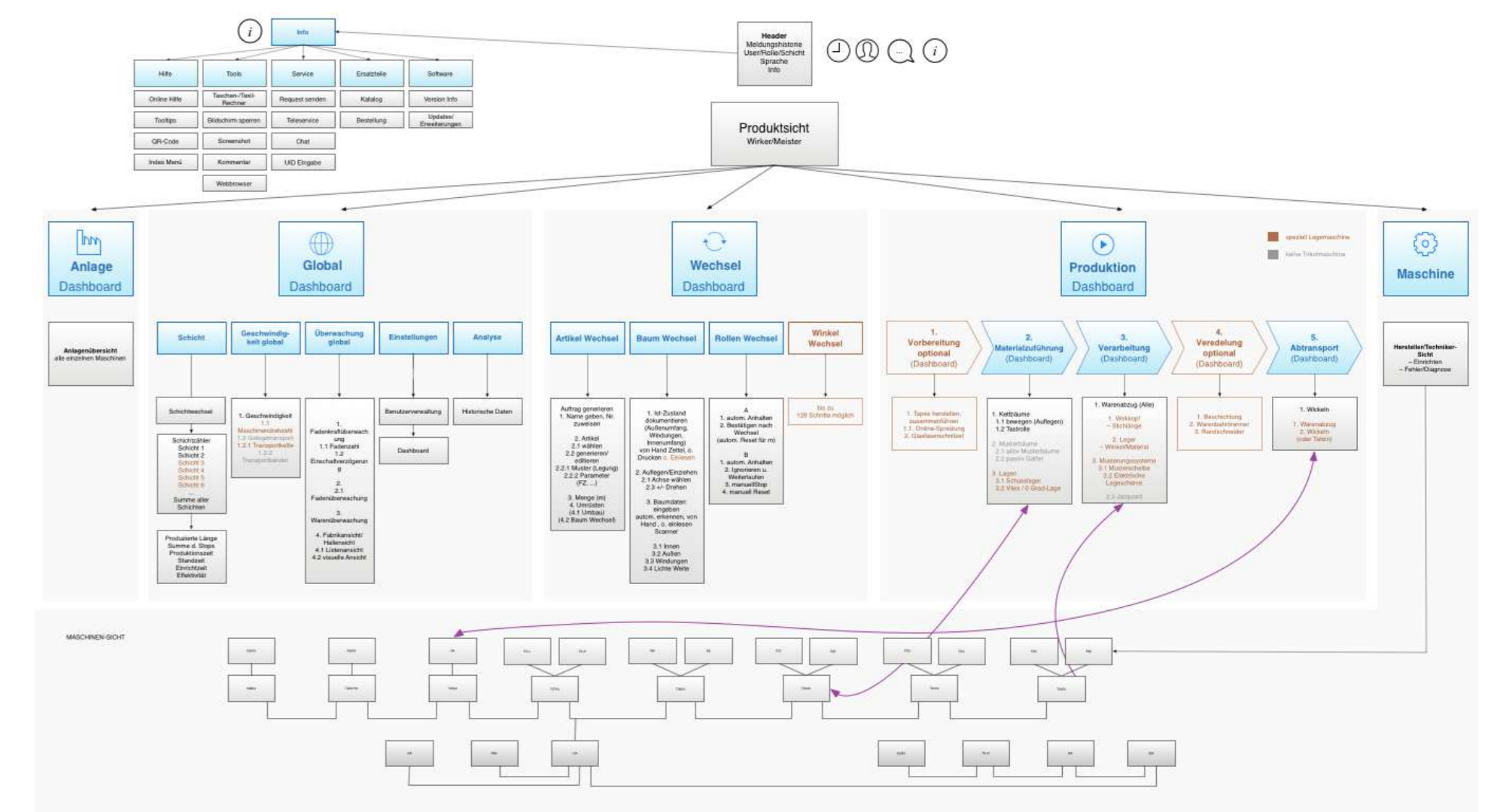
Navigation Metaphor



Process-oriented Views and Navigation



List-based Organisation of Machine Modules



Information Architecture

Screen Design

Design Principles

- Functional Approach
- Layer Based Organisation of Screen Elements
- Intuitive Control Design

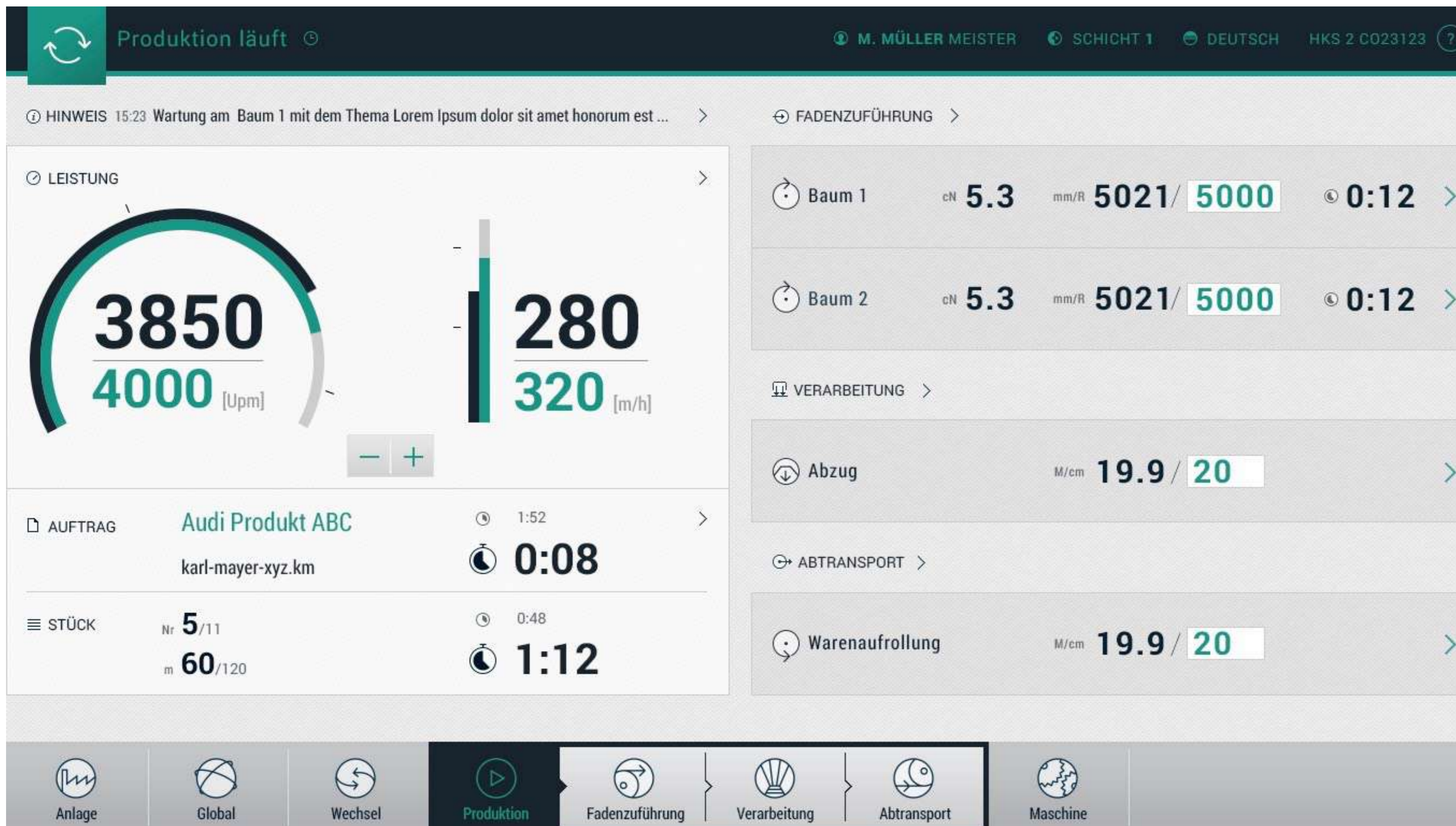
- Consistent Color Concept
- Relevant Icon Style

- Joy of Use



KARL MAYER

Client Brand



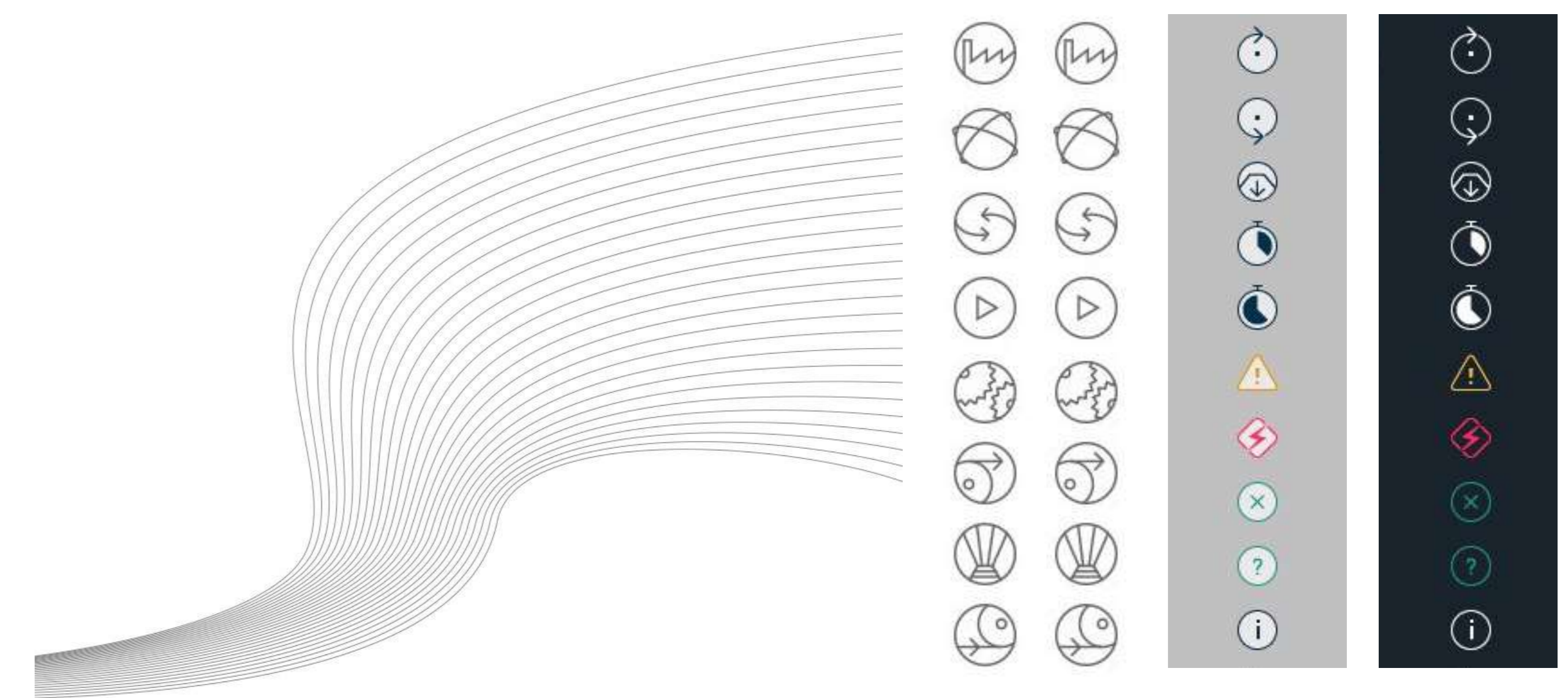
Dashboard



Signal Colors



Controls Examples



Icon Style

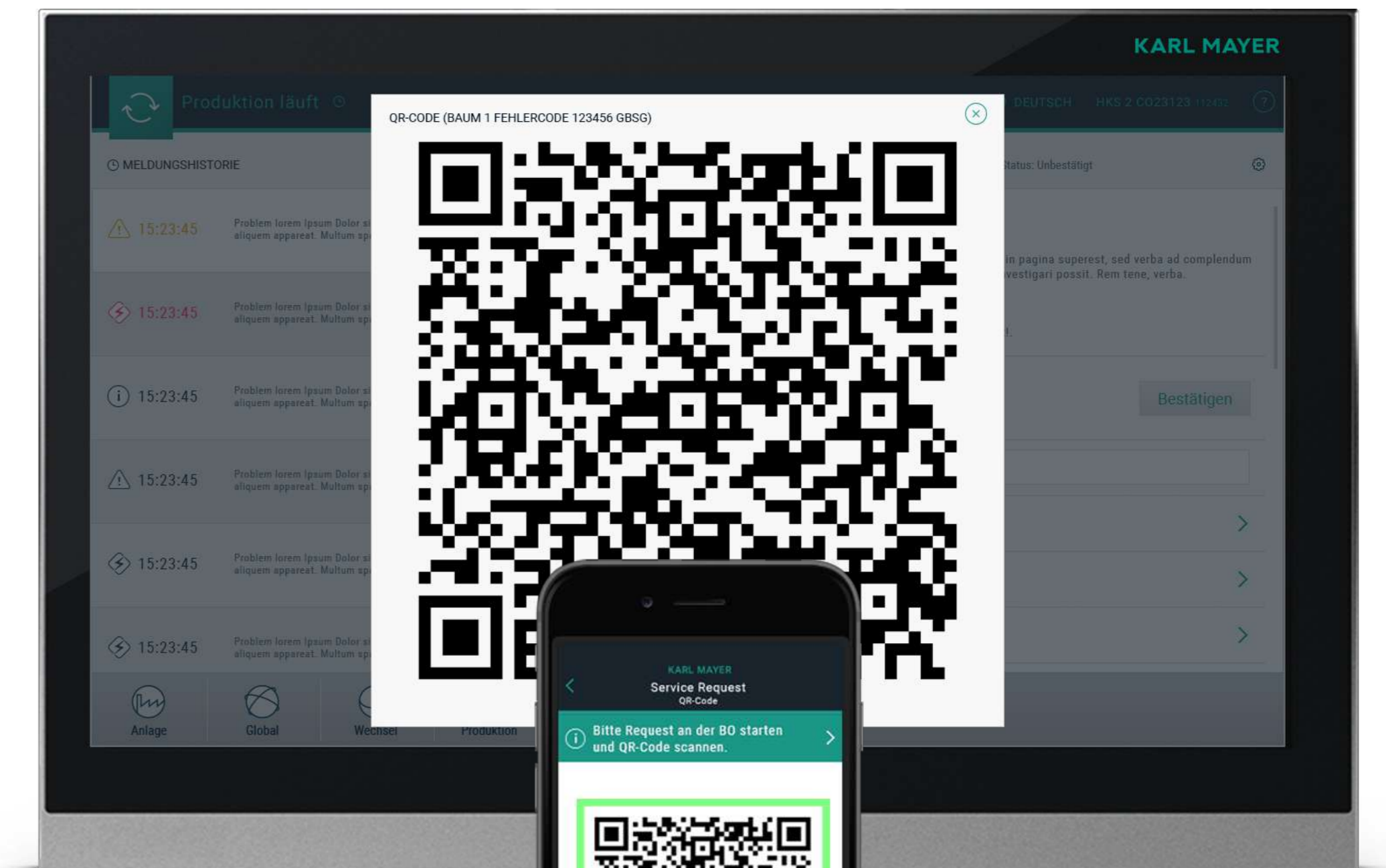
Mobile App

Feature Extensions

- Plant View
- Data Analysis
- Service Request
- Online Help
- Spare Parts

Special Feature

- Secure QR-Code Communication with Machine Interface to transfer Machine Data to Manufacturer Service Department



QR-Code Scan



KARL MAYER
SERVICE

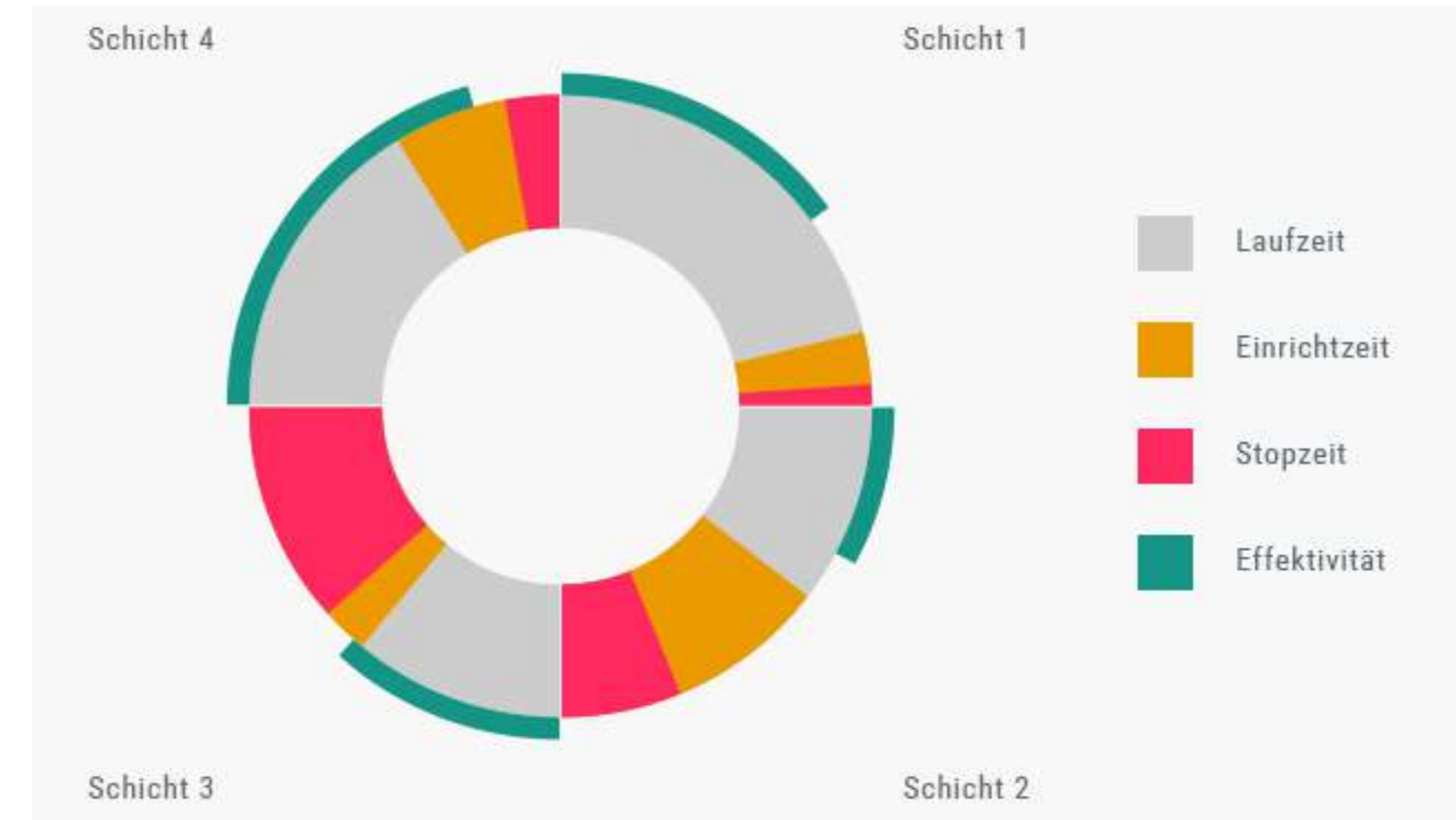
Design Features

Features

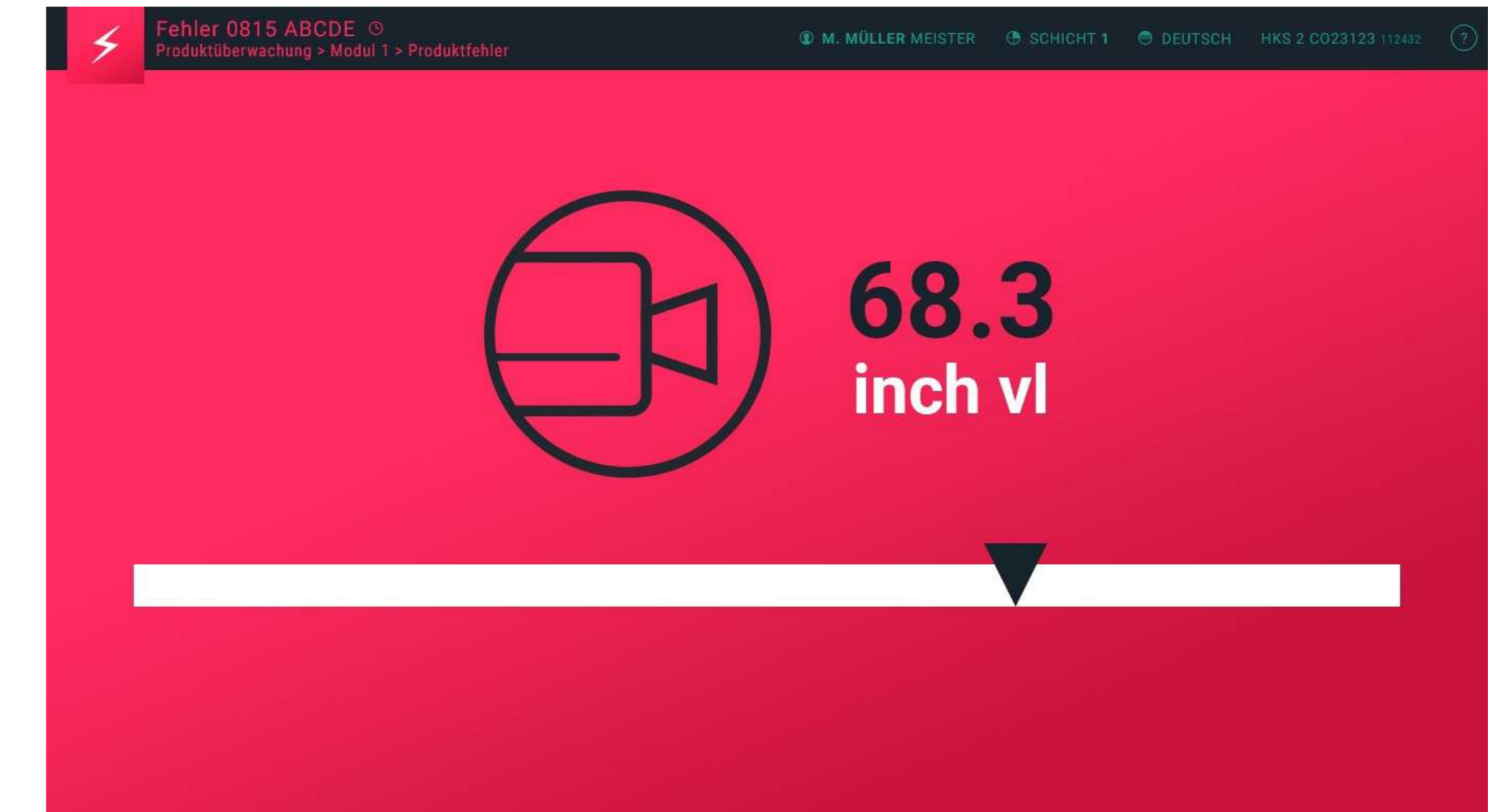
- Responsive Design
- Flexible adjustable Functionality
- Expandable to new Machine Types
- Step by Step assisted Processes
- Customizable by Favorites
- Unified Messaging System
- Integrated Contextual Help
- Long-distance Monitoring via Screen Saver Mode
- Coherent Graphic Charts for Analysis



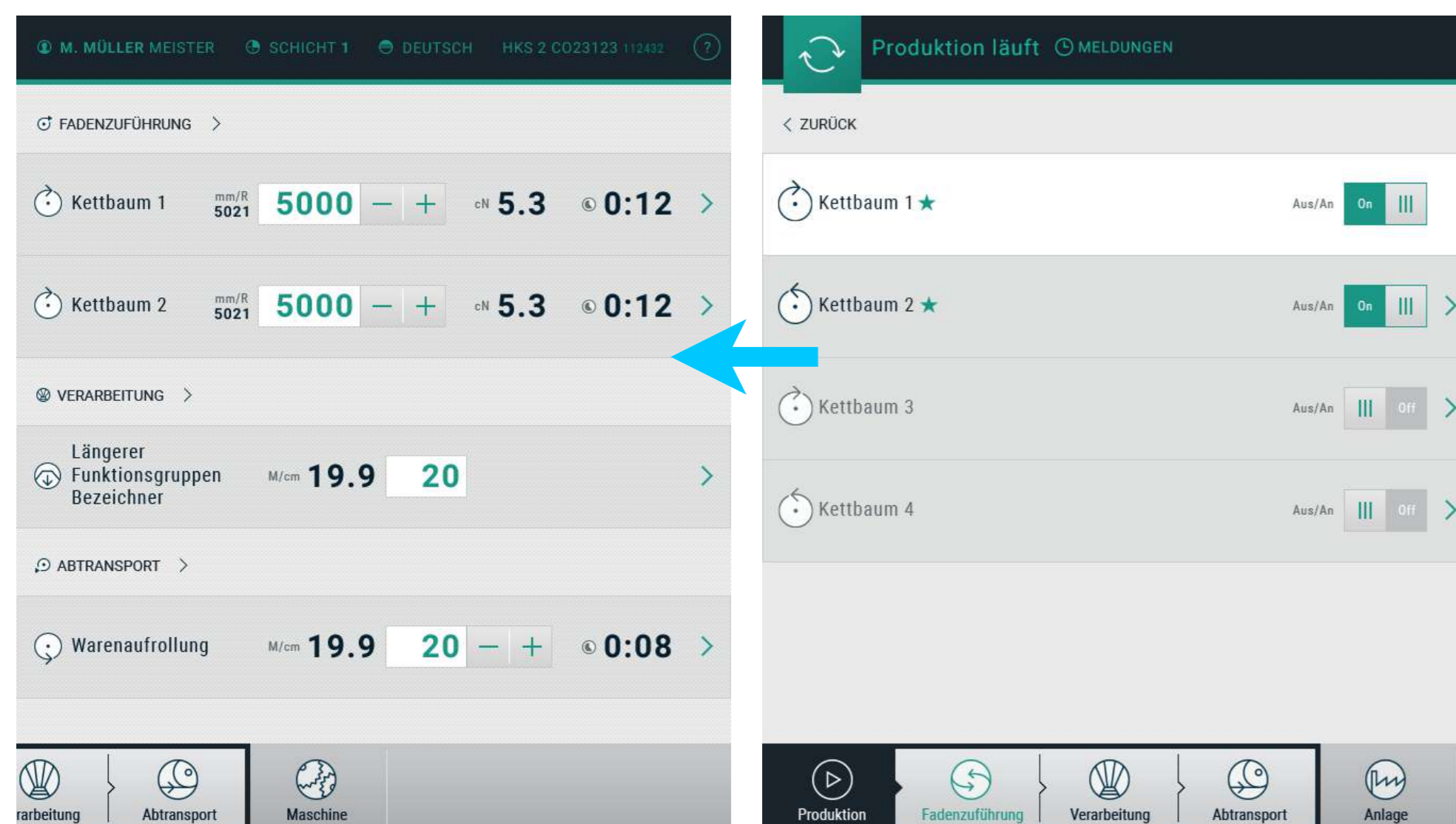
Graphic Charts



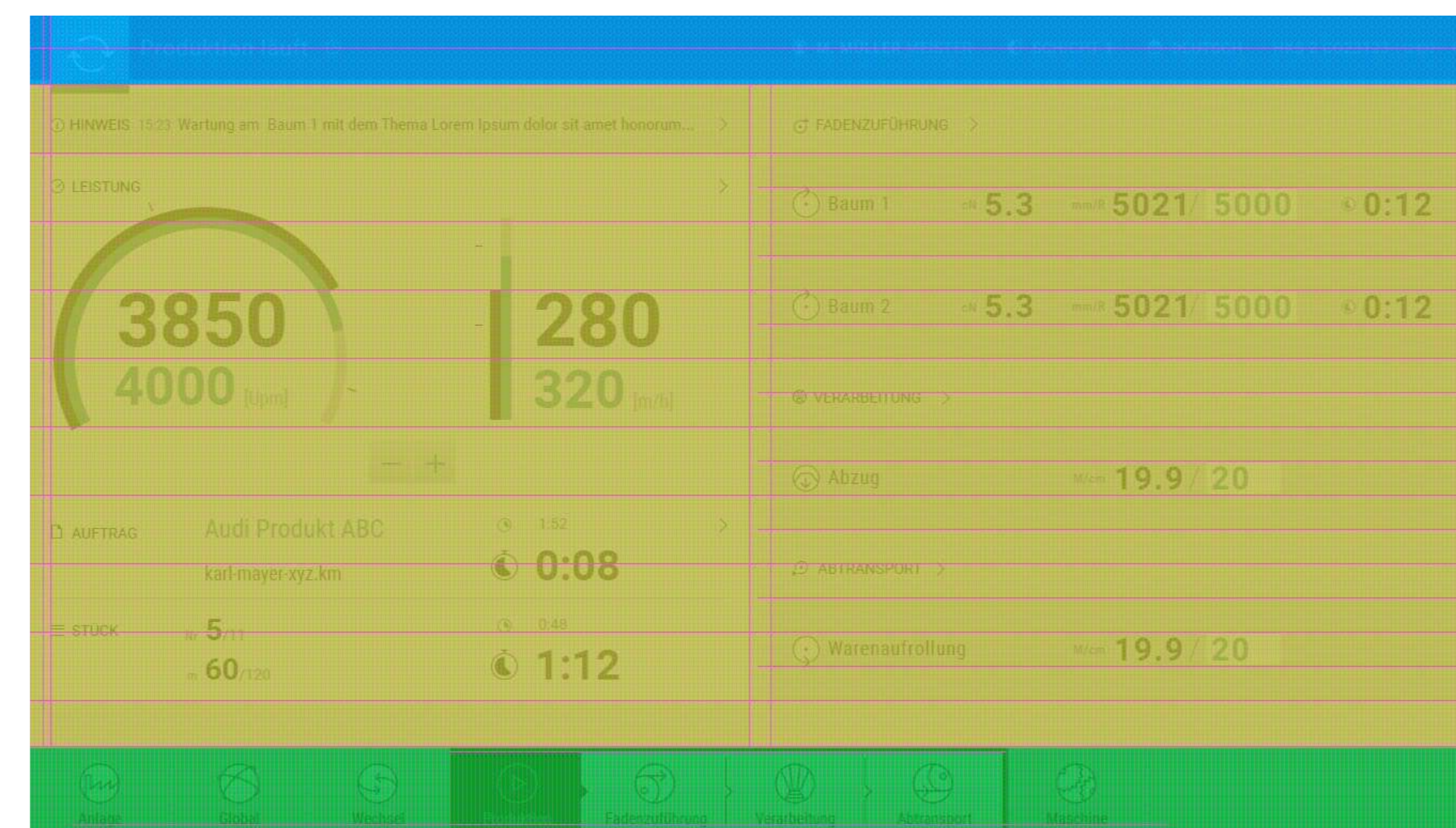
Shift Data Analysis



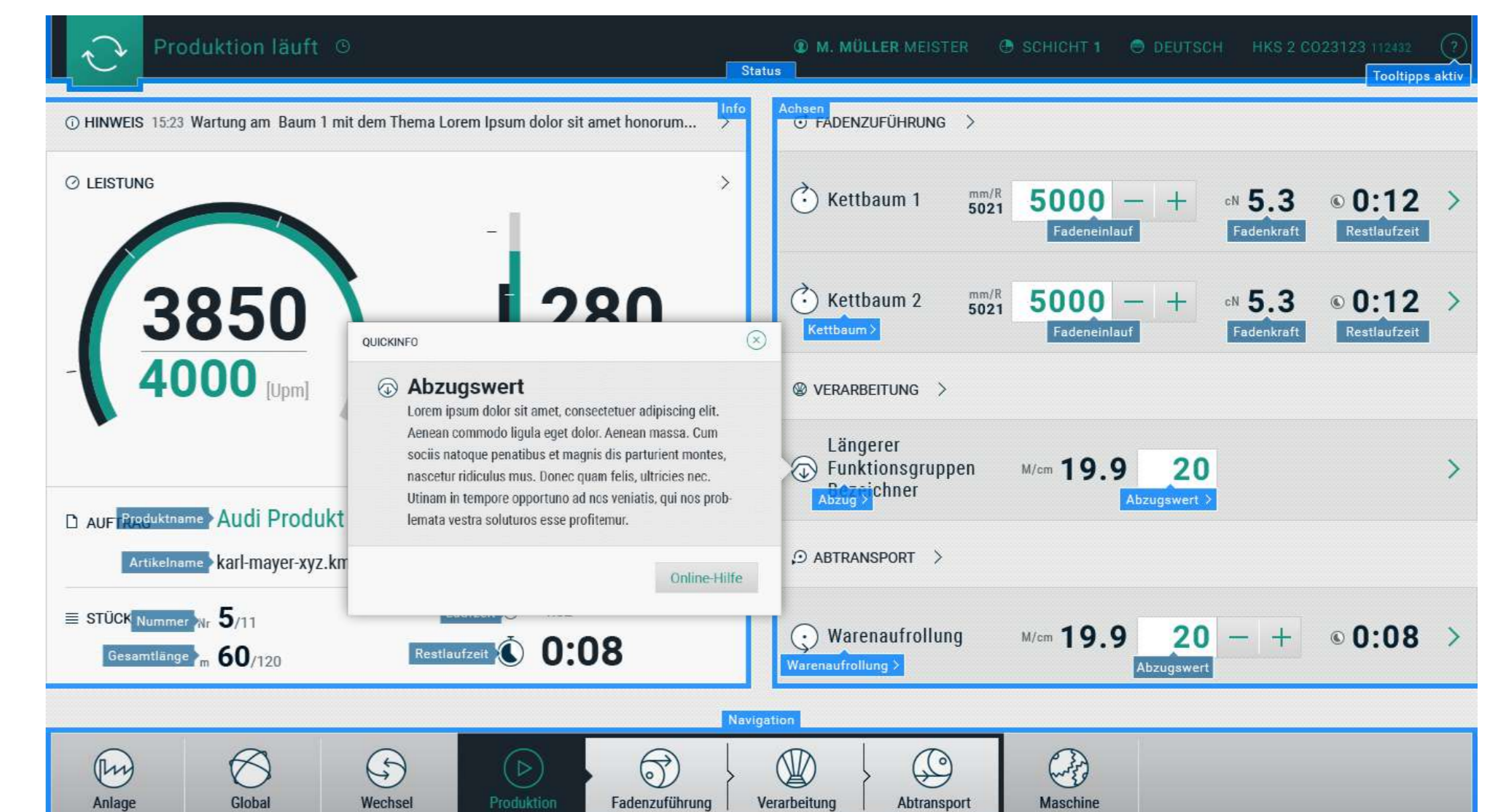
Long-distance Monitoring via Screen Saver Mode



Customizable Dashboard



Flexible Grid and Screen Areas



Tooltips and Contextual Help

HMI Project GmbH / Frankfurter Straße 92 / 97082 Würzburg

T +49 931 453297-70 / hmi-project.com